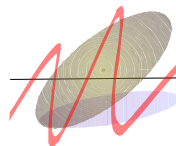




Annual EPP Meeting Bled, Slovenia
18. – 20. May 2006

Status speech of the new EU acceding countries

dr. Aleš KUHAR



*Chair for agricultural economics, policy and
law*

University of Ljubljana
Biotechnical Faculty

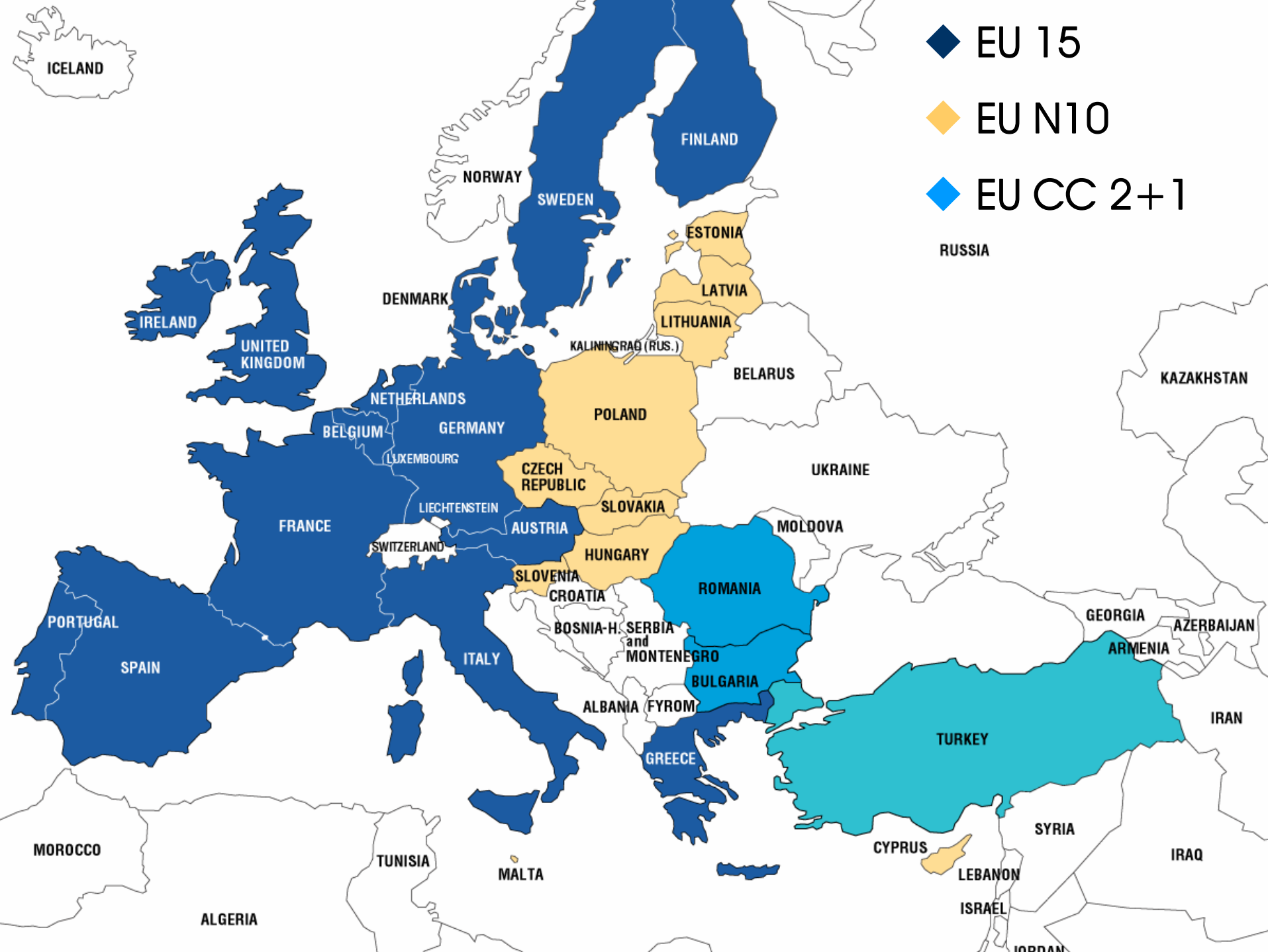
OUTLINE OF THE PRESENTATION

- *The Last Enlargement Wave*
 - *Basic facts*
 - *New Member States (NMS)*
- *Agricultural sector (EU-15 vs. EU -N10)*
 - *General comparisons*
- *Pig sector*
- *Future perspectives and conclusions*

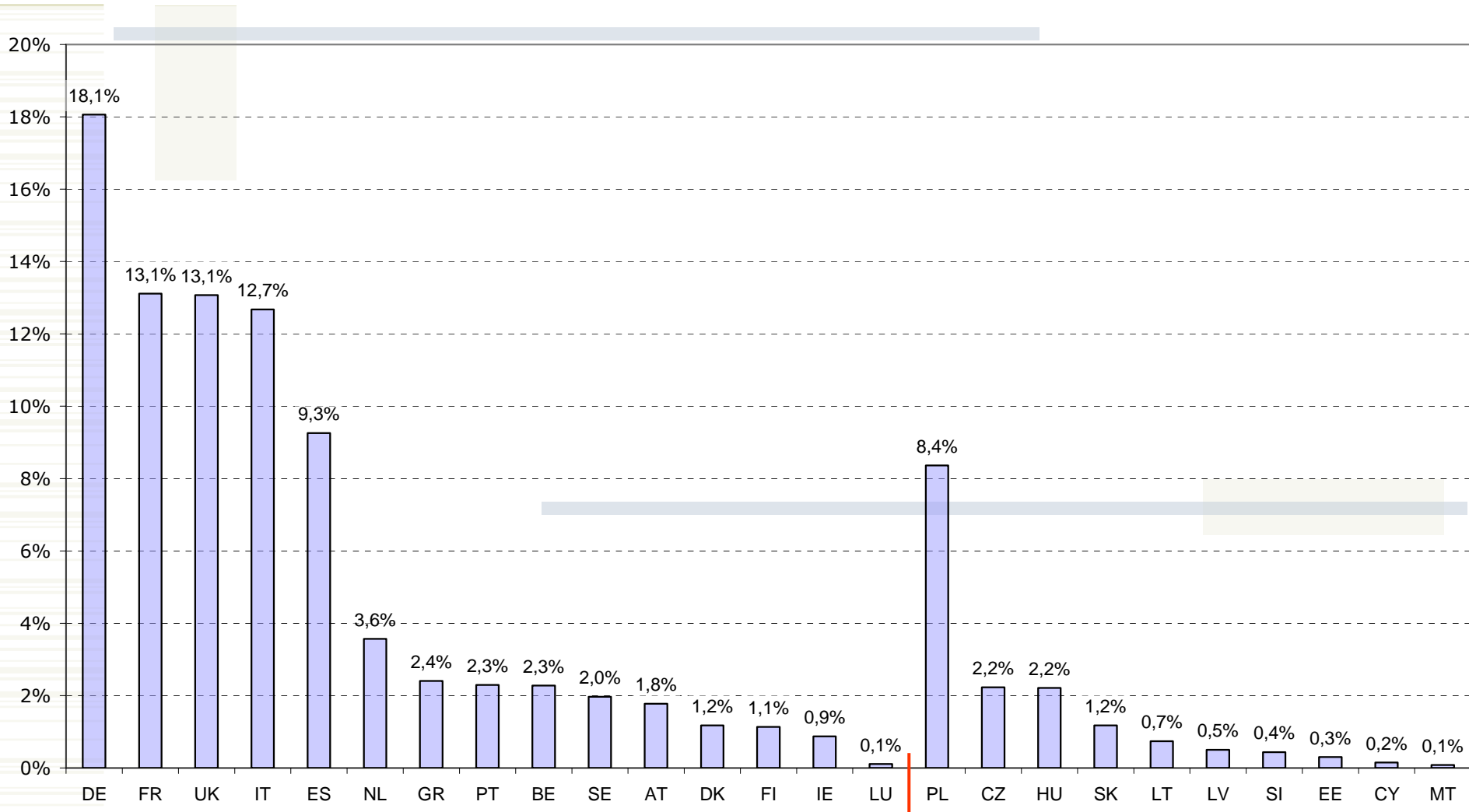


The Last Enlargement Wave

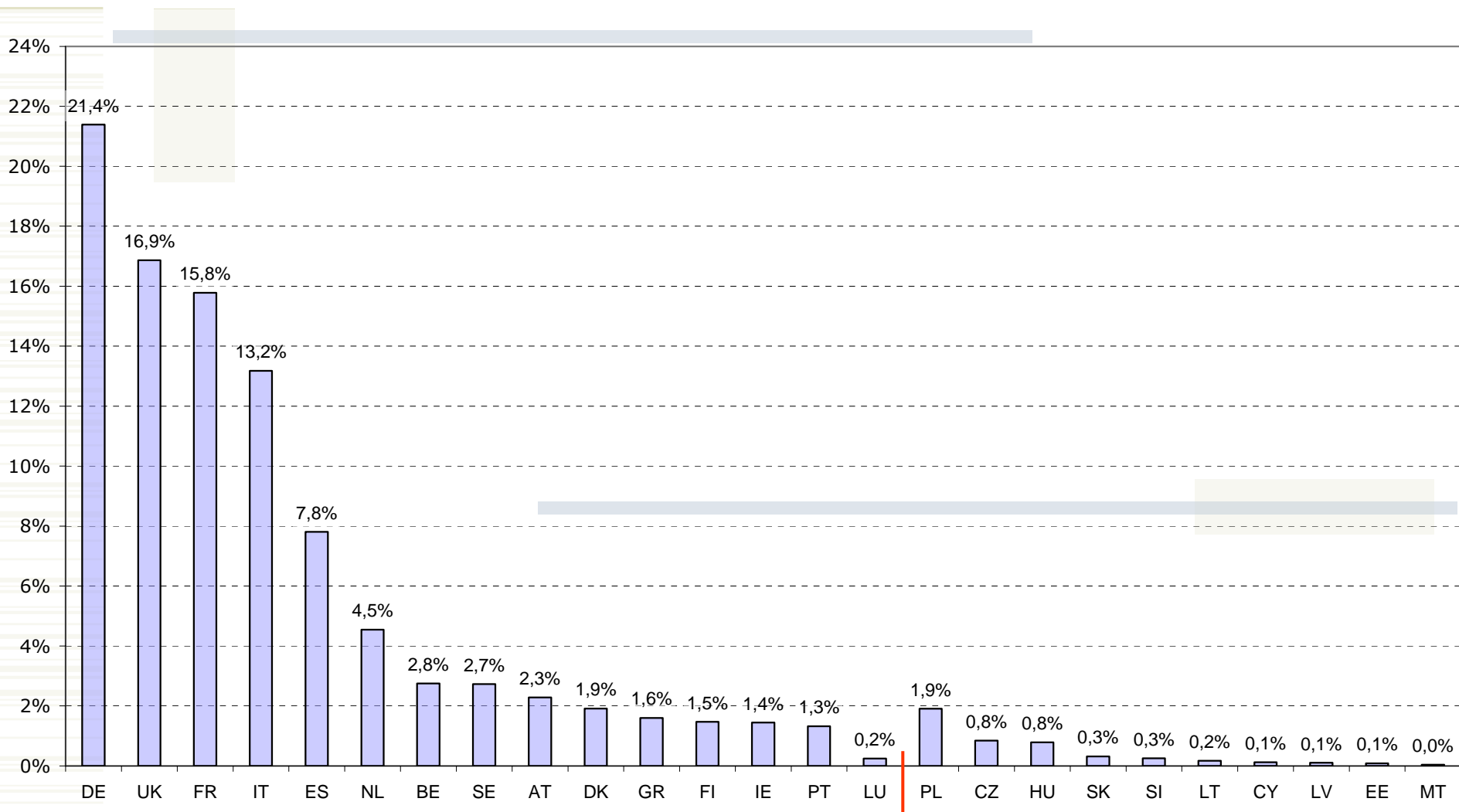
Basic facts
New Member States



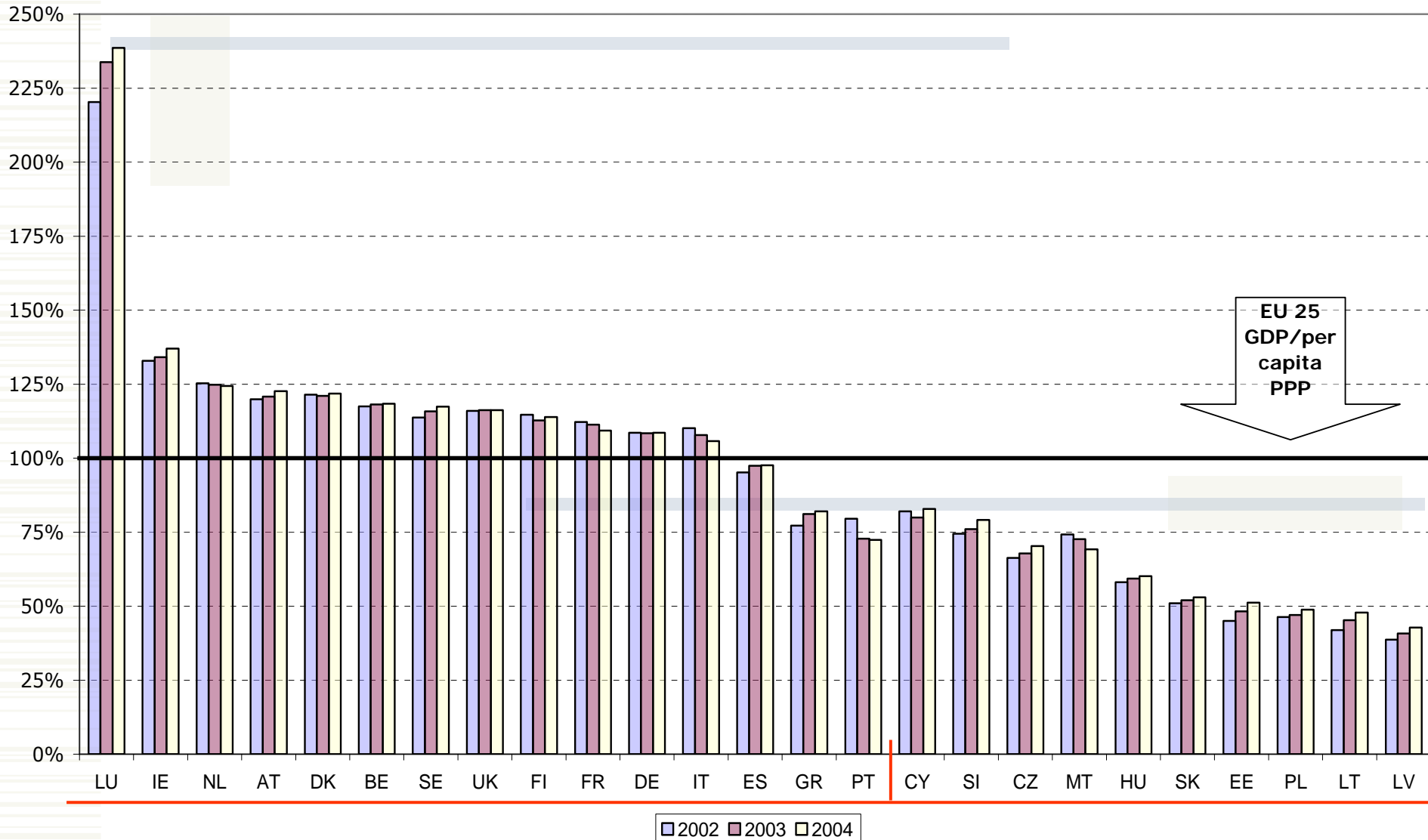
EU N10 contribute about 16% to 460 mio of EU 25 citizens



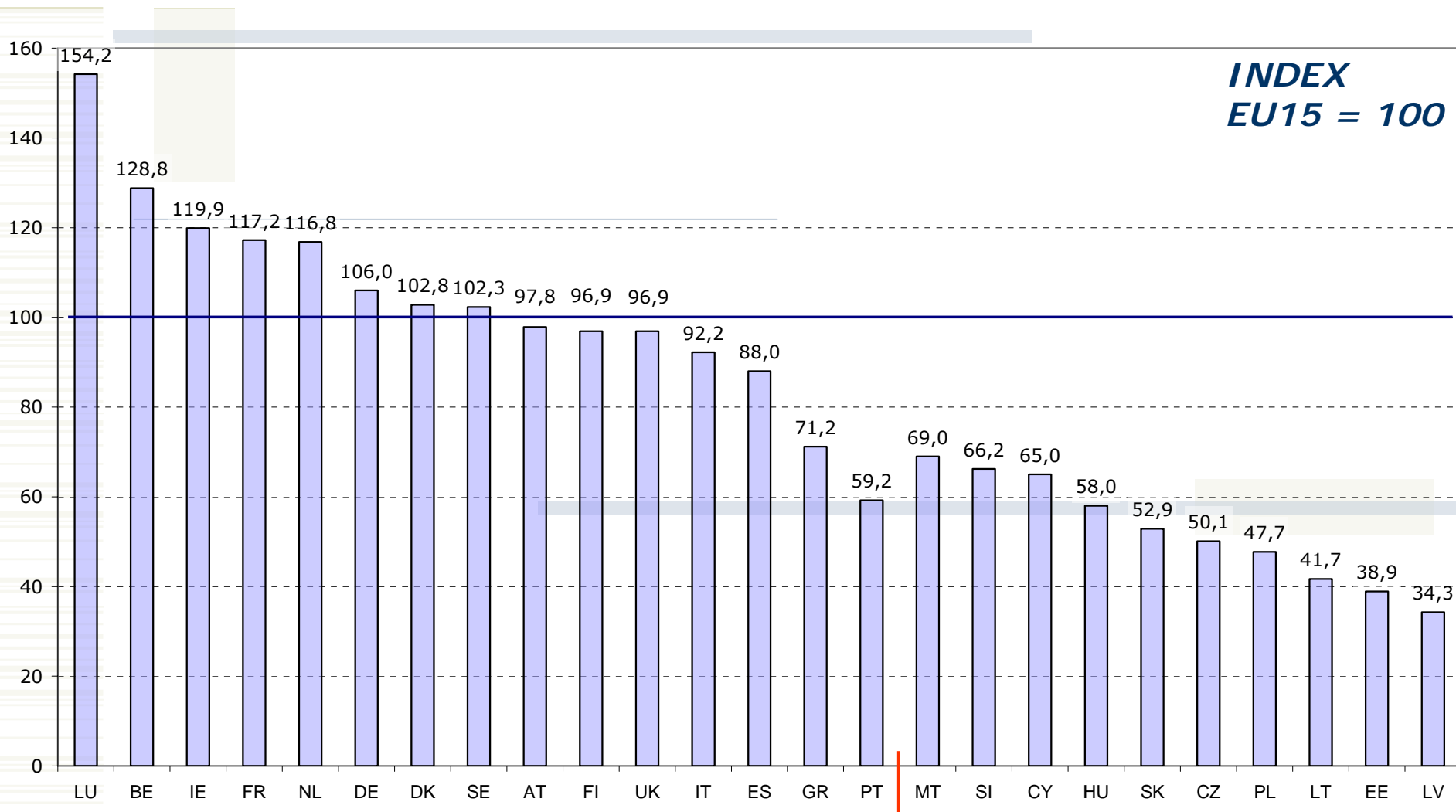
EU N10 less than 5% of total EU 25 GDP in 2004



EU N10 GDP per capita PPP is only at below 2/3 of EU 25



EU N10 Labour Productivity in PPS is just above 1/2 of EU 15

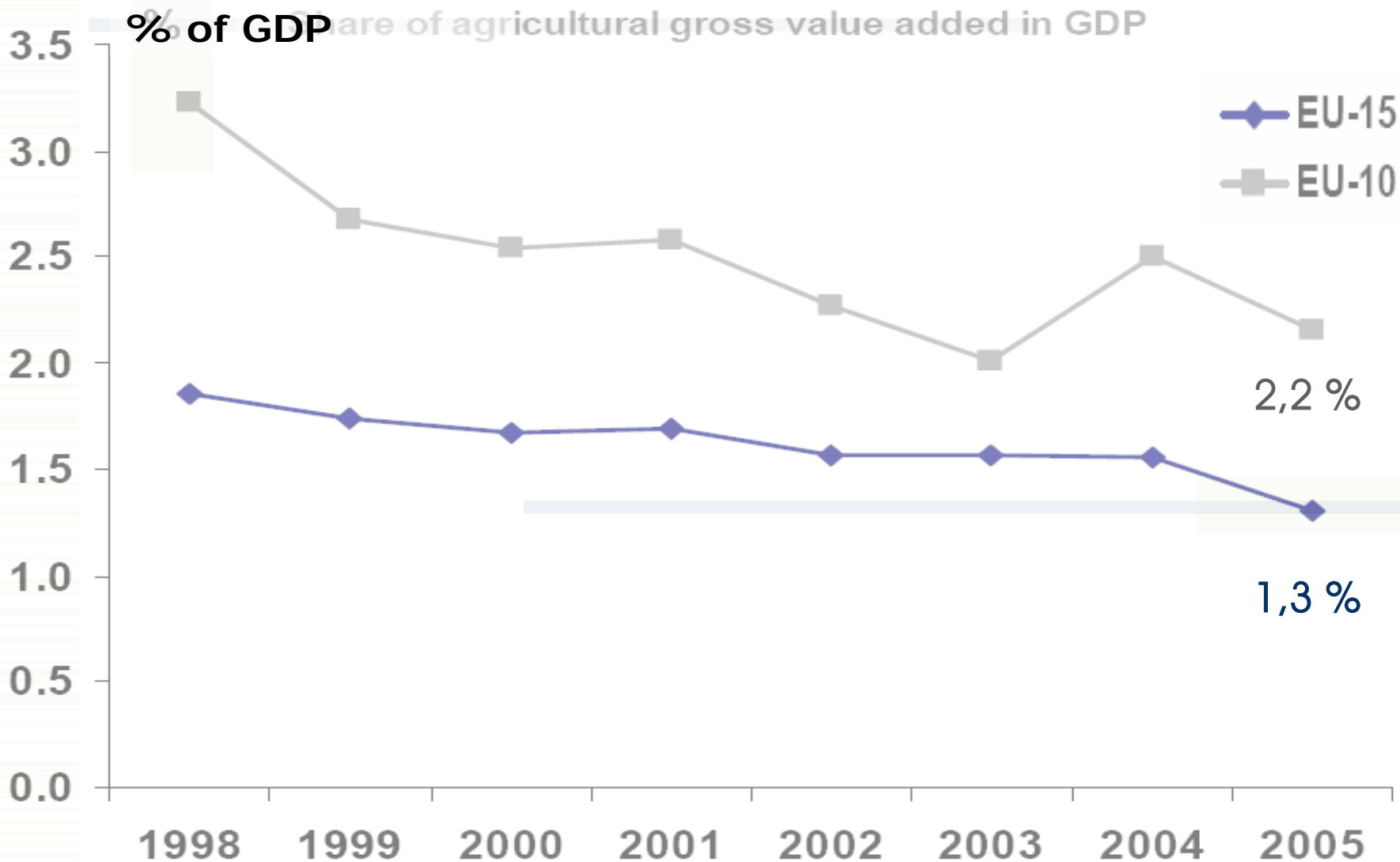




Agricultural sector

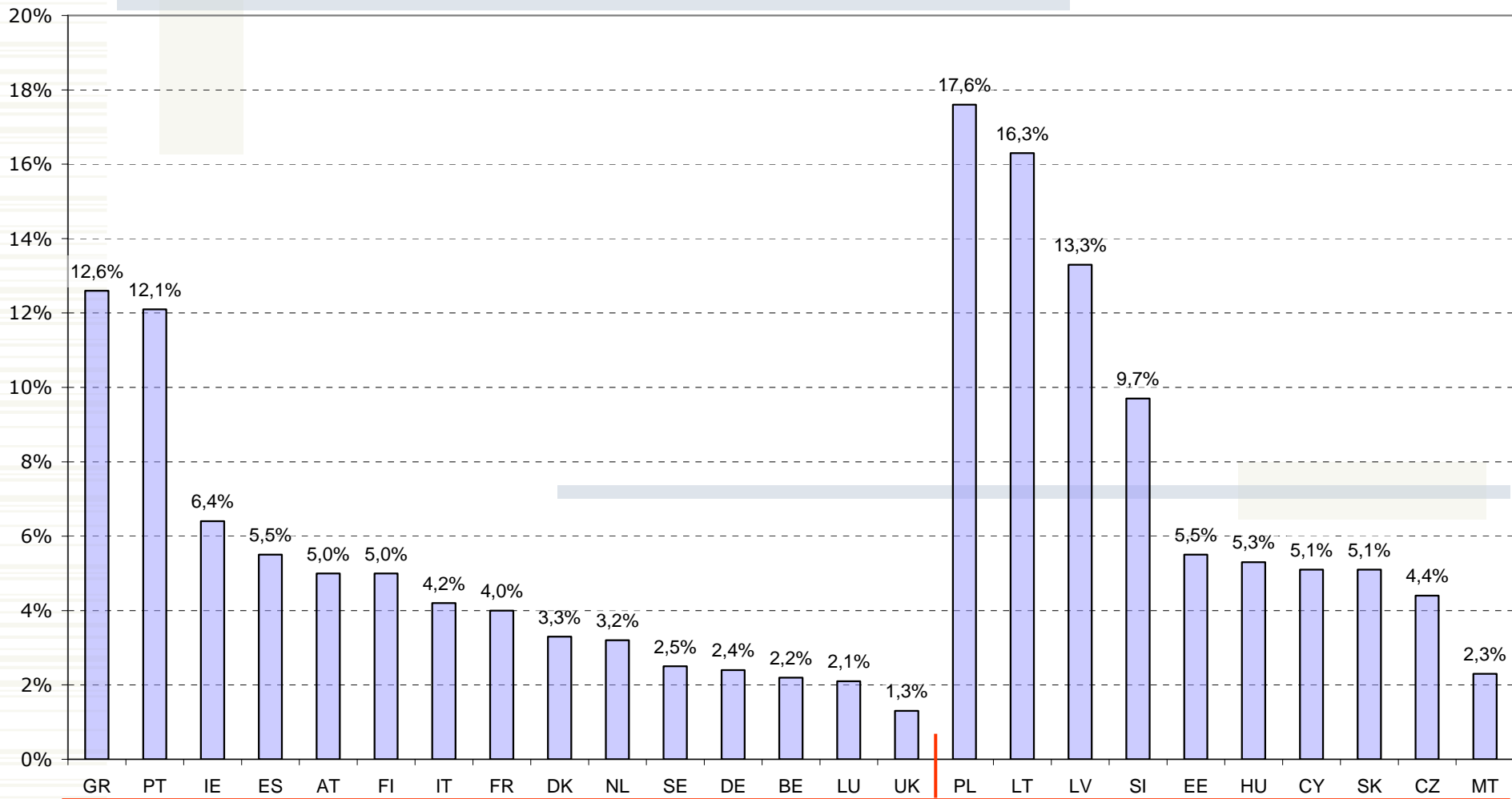
General comparisons

Agriculture has almost double share of GVA in GDP in EU N10



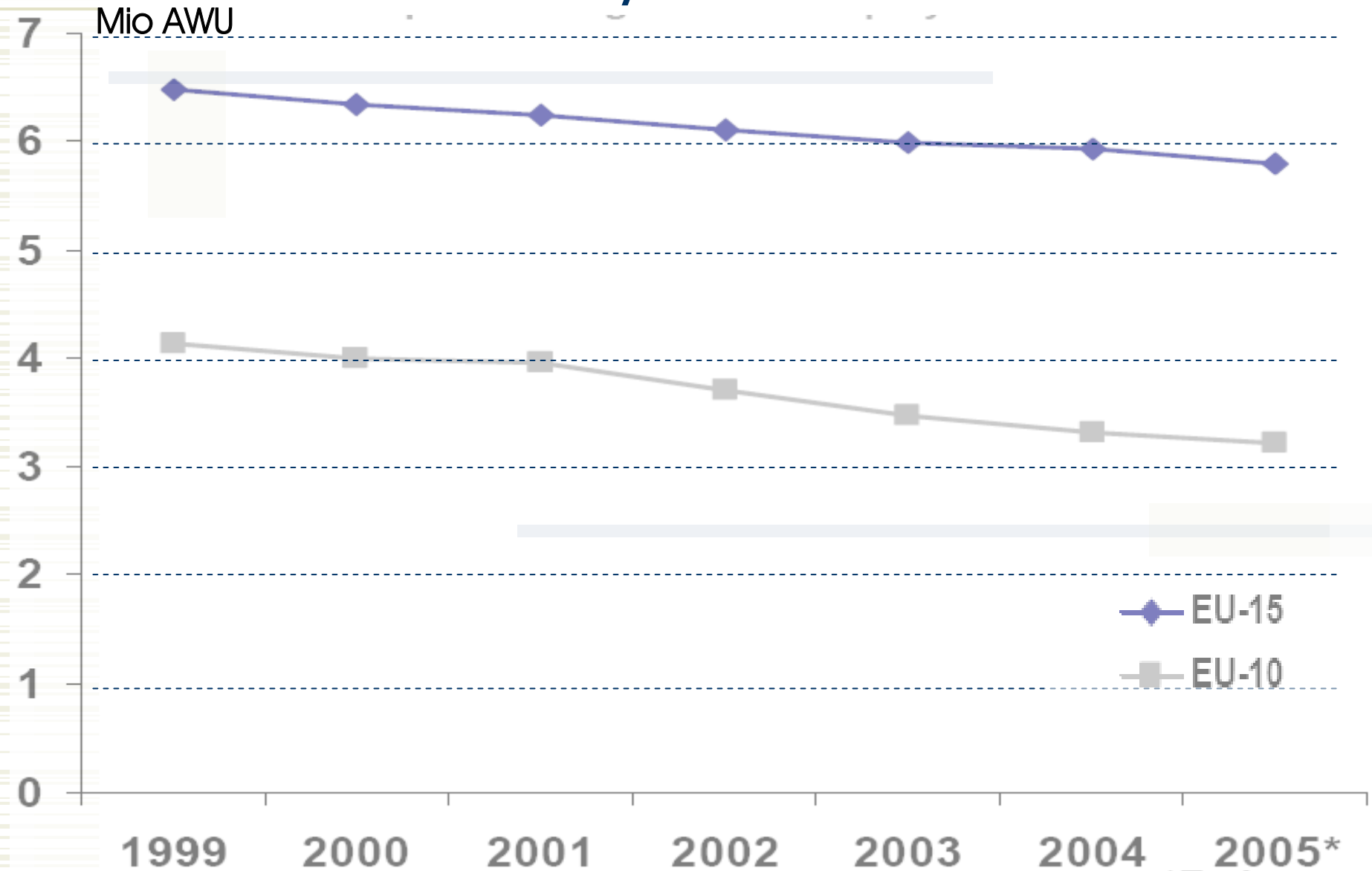
Share of agriculture in total employment

EU N10 = 13% vs. EU 15 = 4%

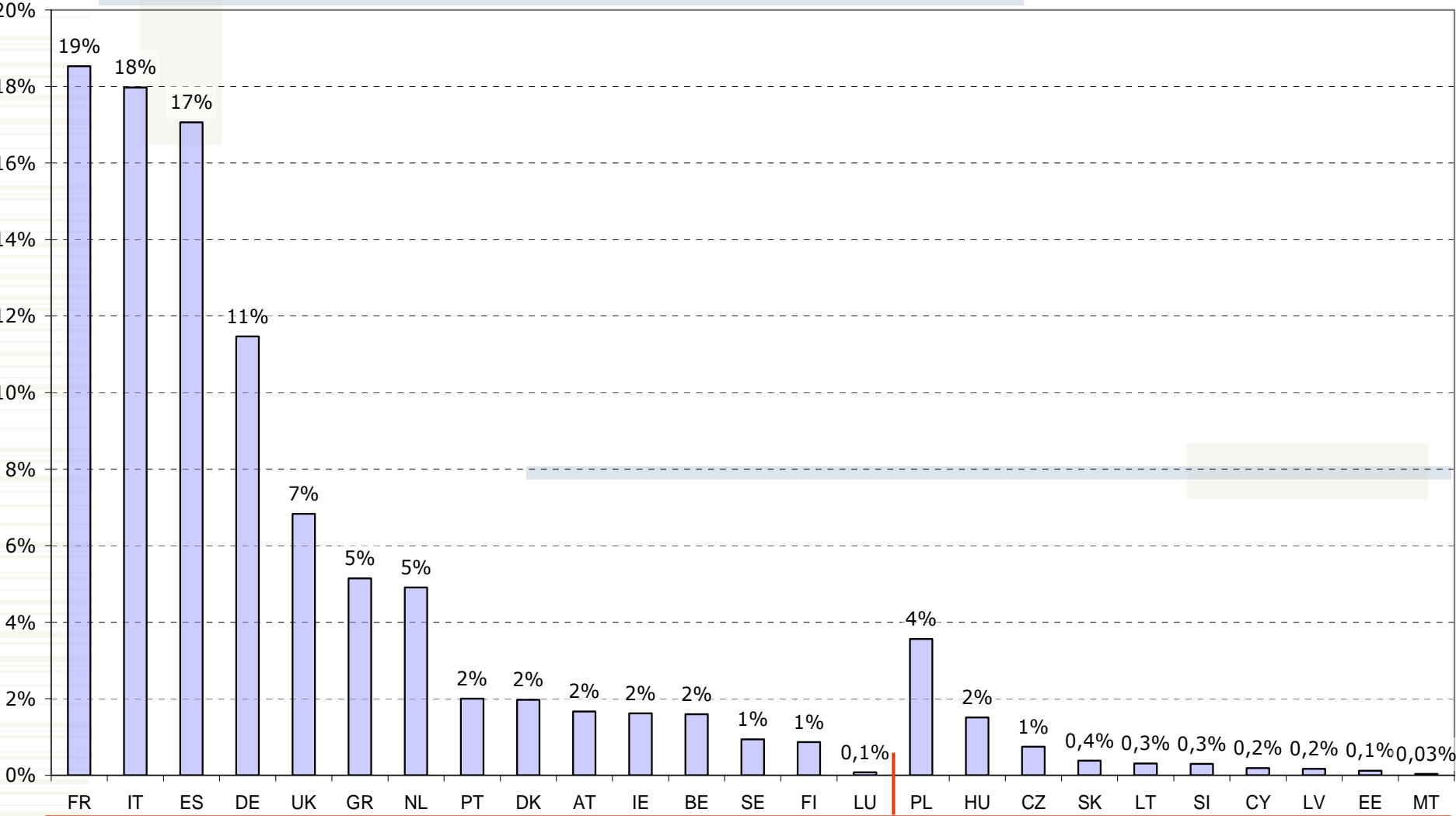


Agricultural employment in AWU

EU N10 1/3 of total EU 25

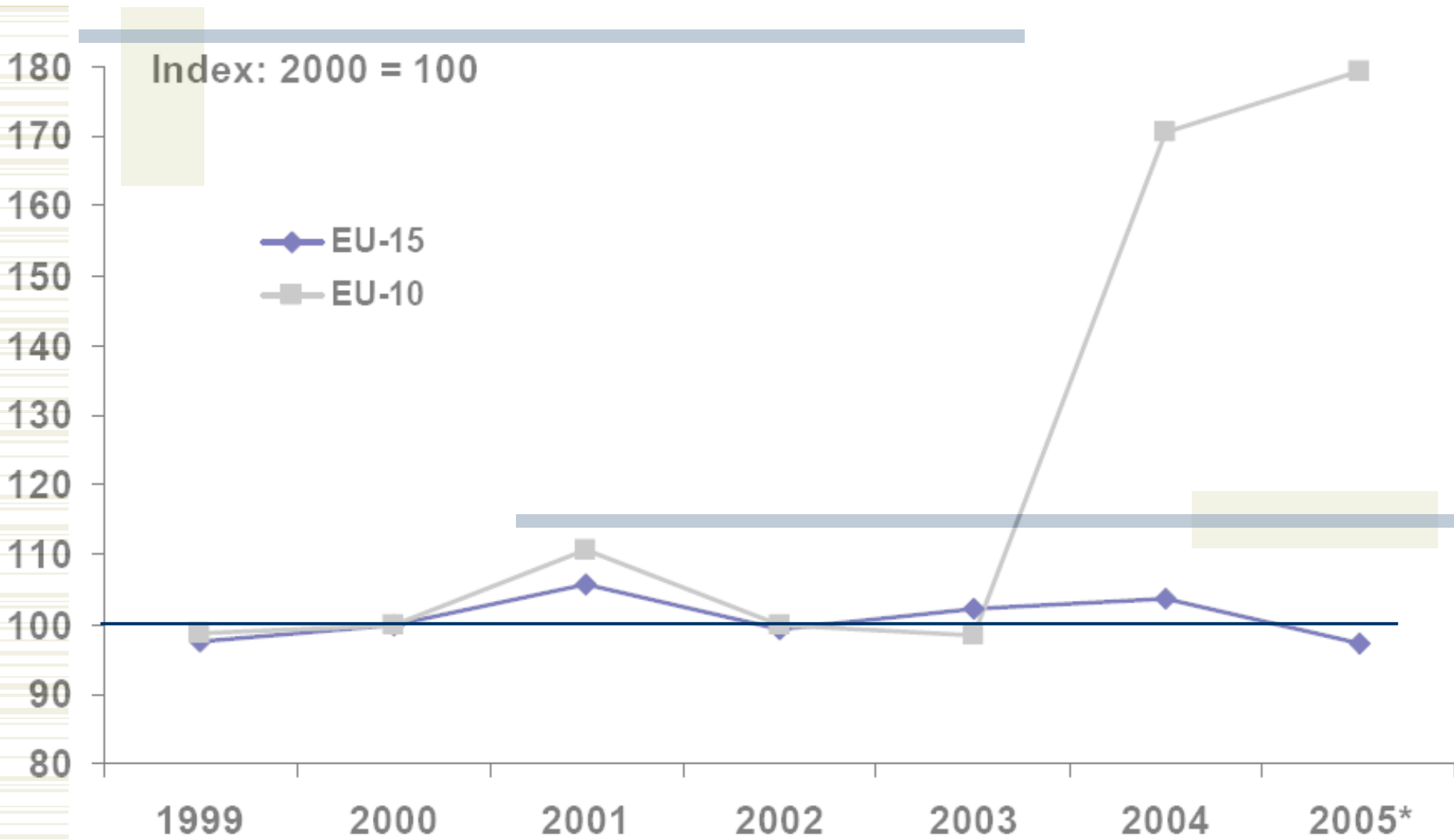


EU N10 about 10% of total GVA from agriculture in EU 25



Net value added per AWU

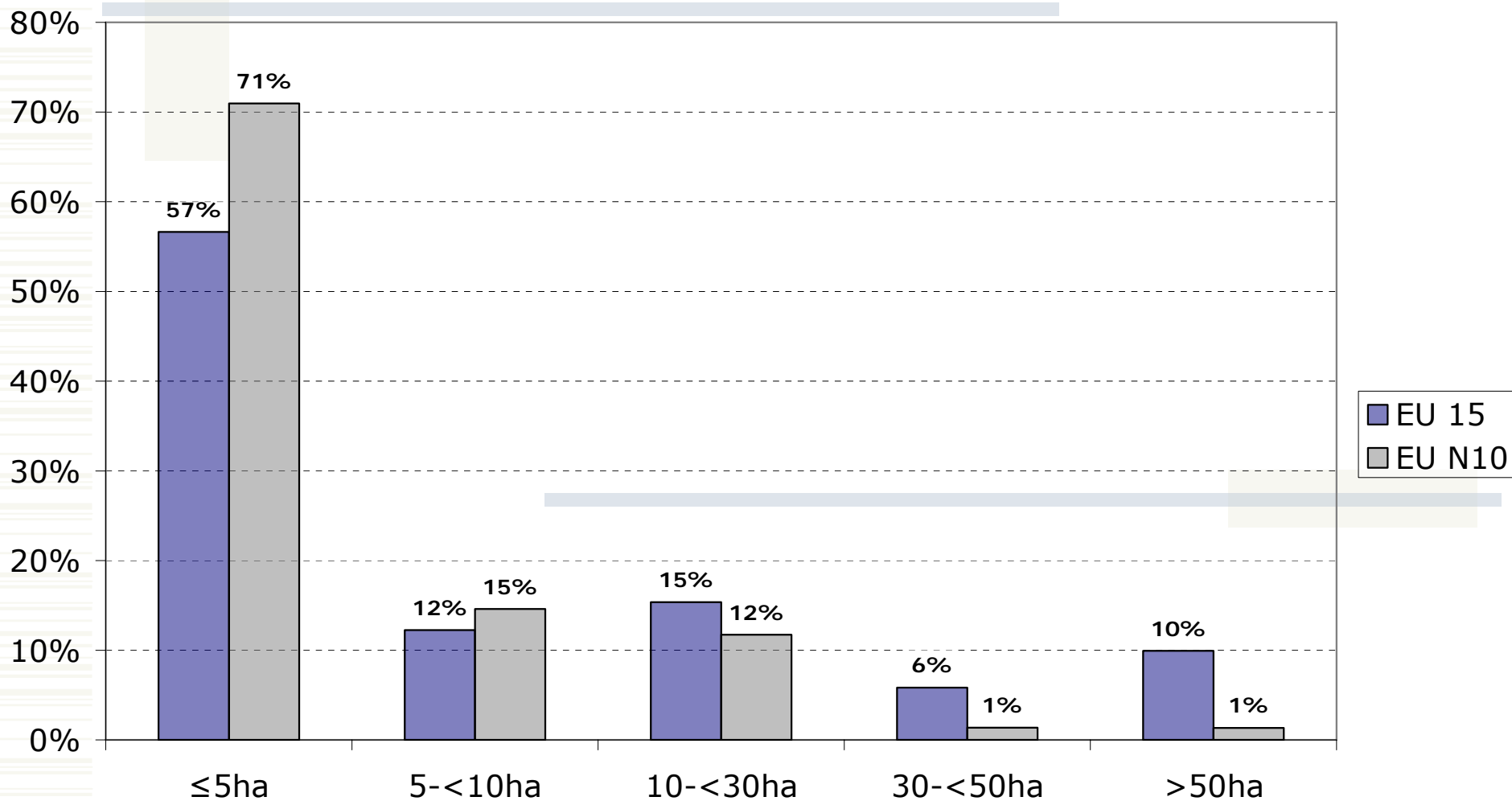
EU N10 1/10 of EU 15



*Estimate

Farm size distribution

1/3 of 10 mio. holdings in EU N10





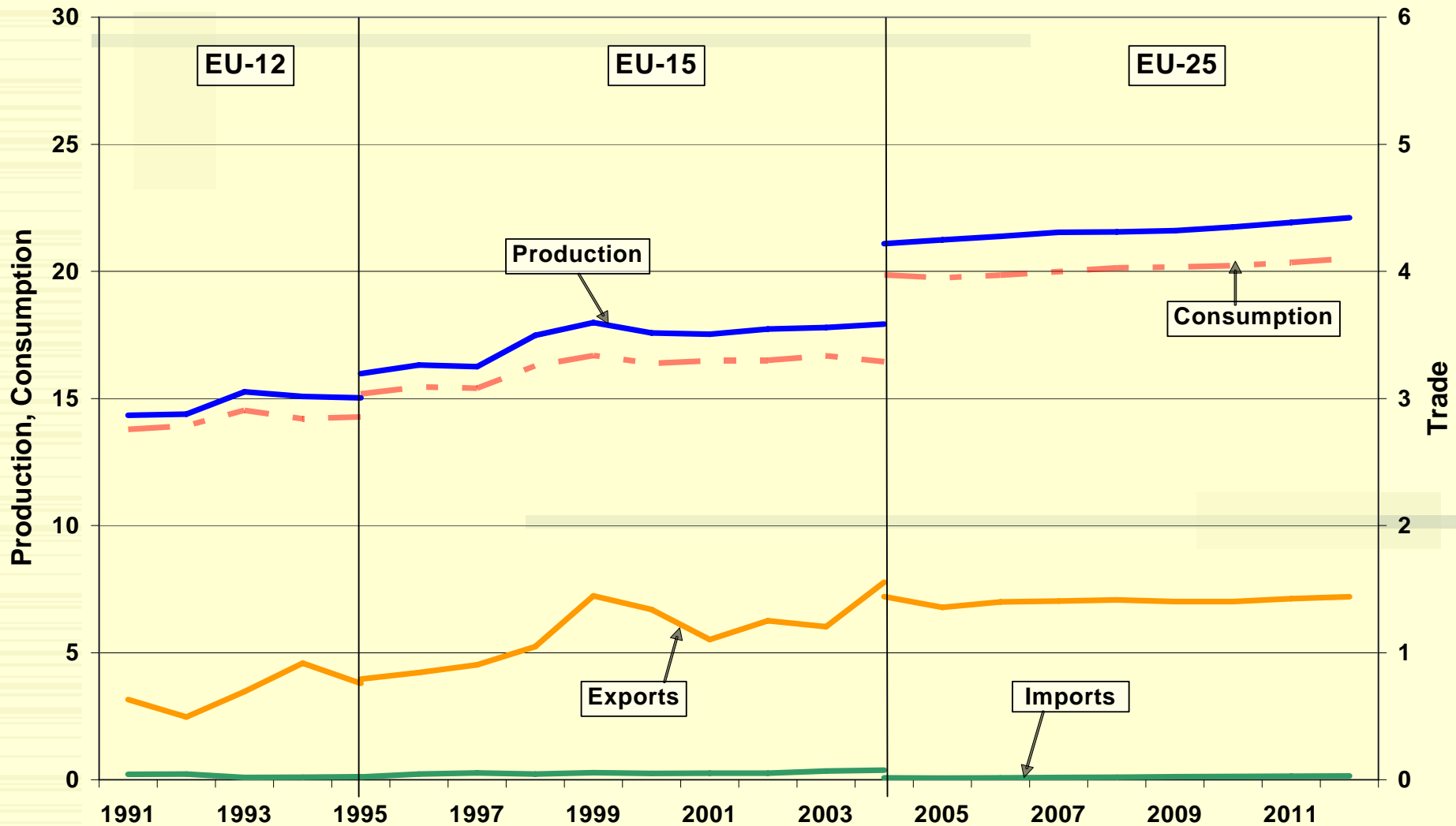


Pig sector



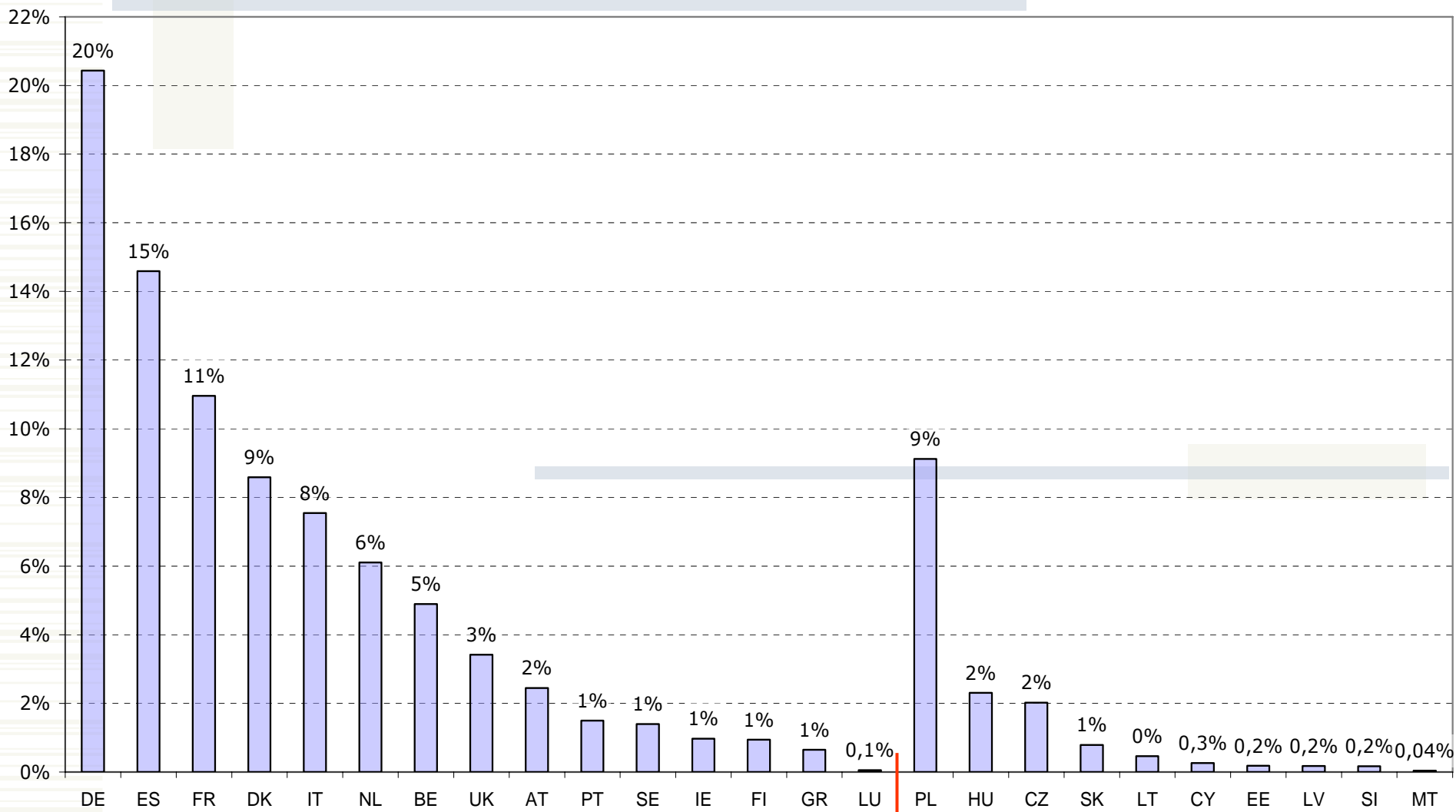
Pig meat production in EU 25

1/4 of world production



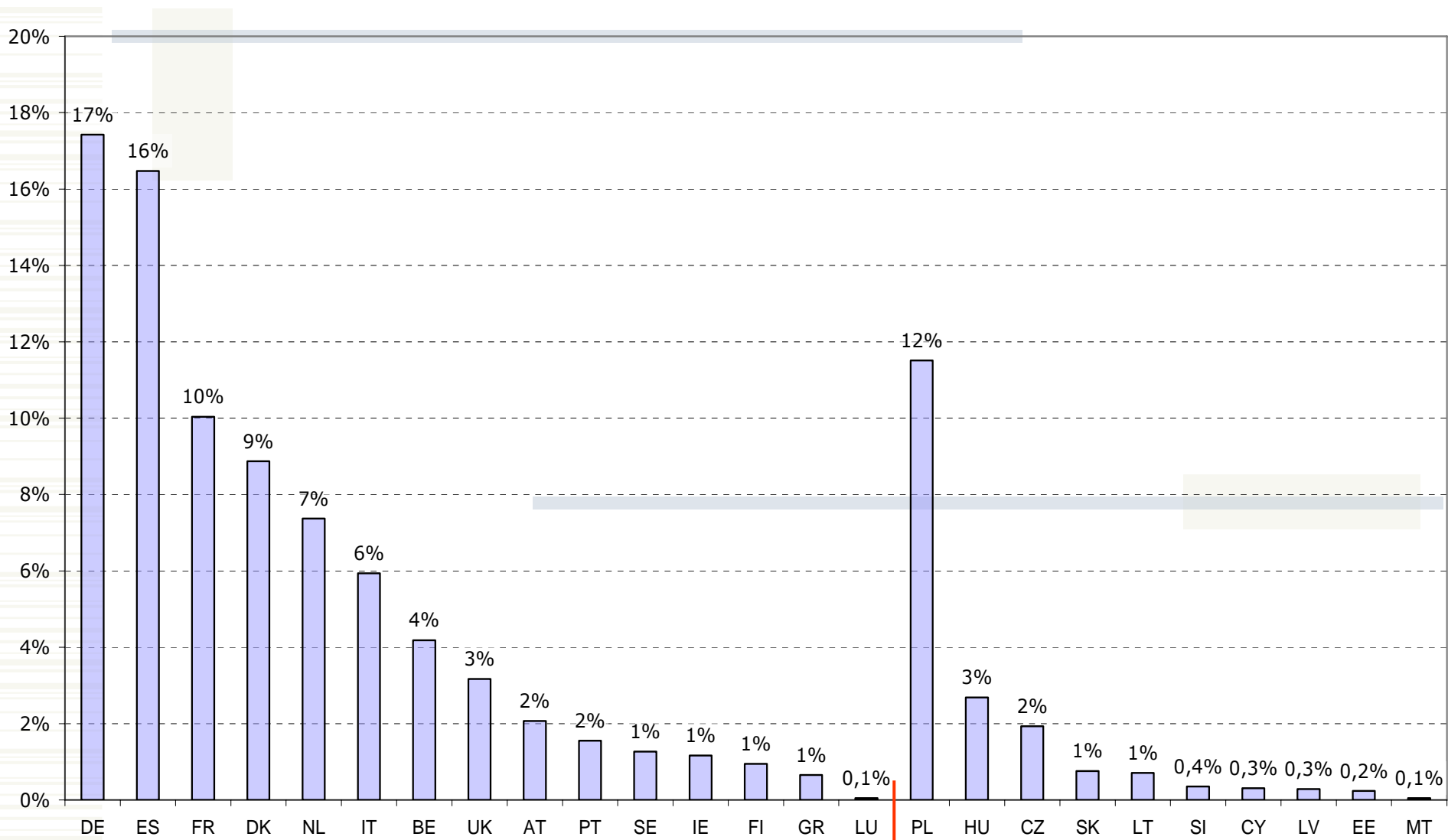
Pig meat production

EU N10 - 16% of EU 25 output

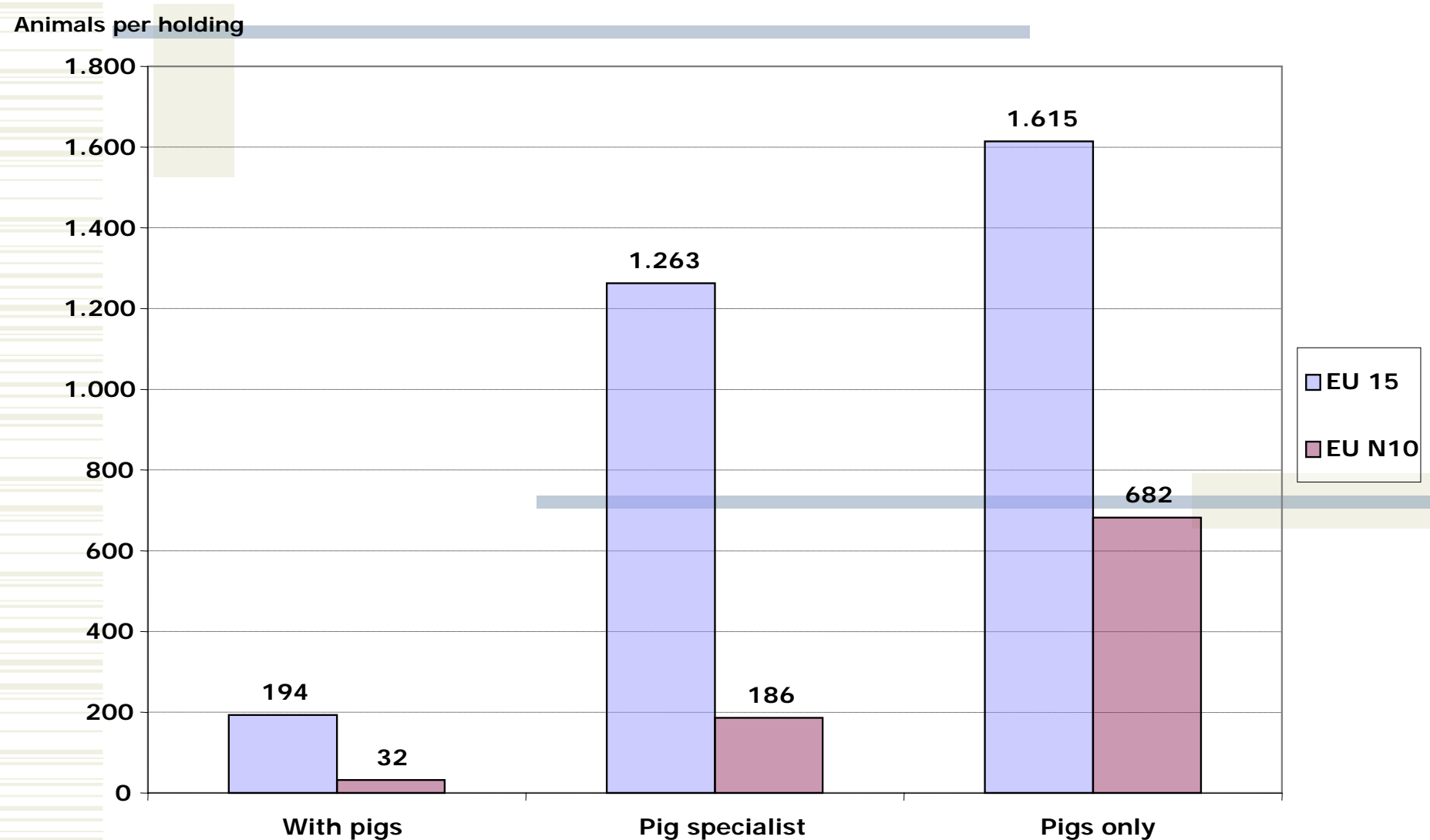


Number of animals

EU N10 - 20% of heads in EU 25



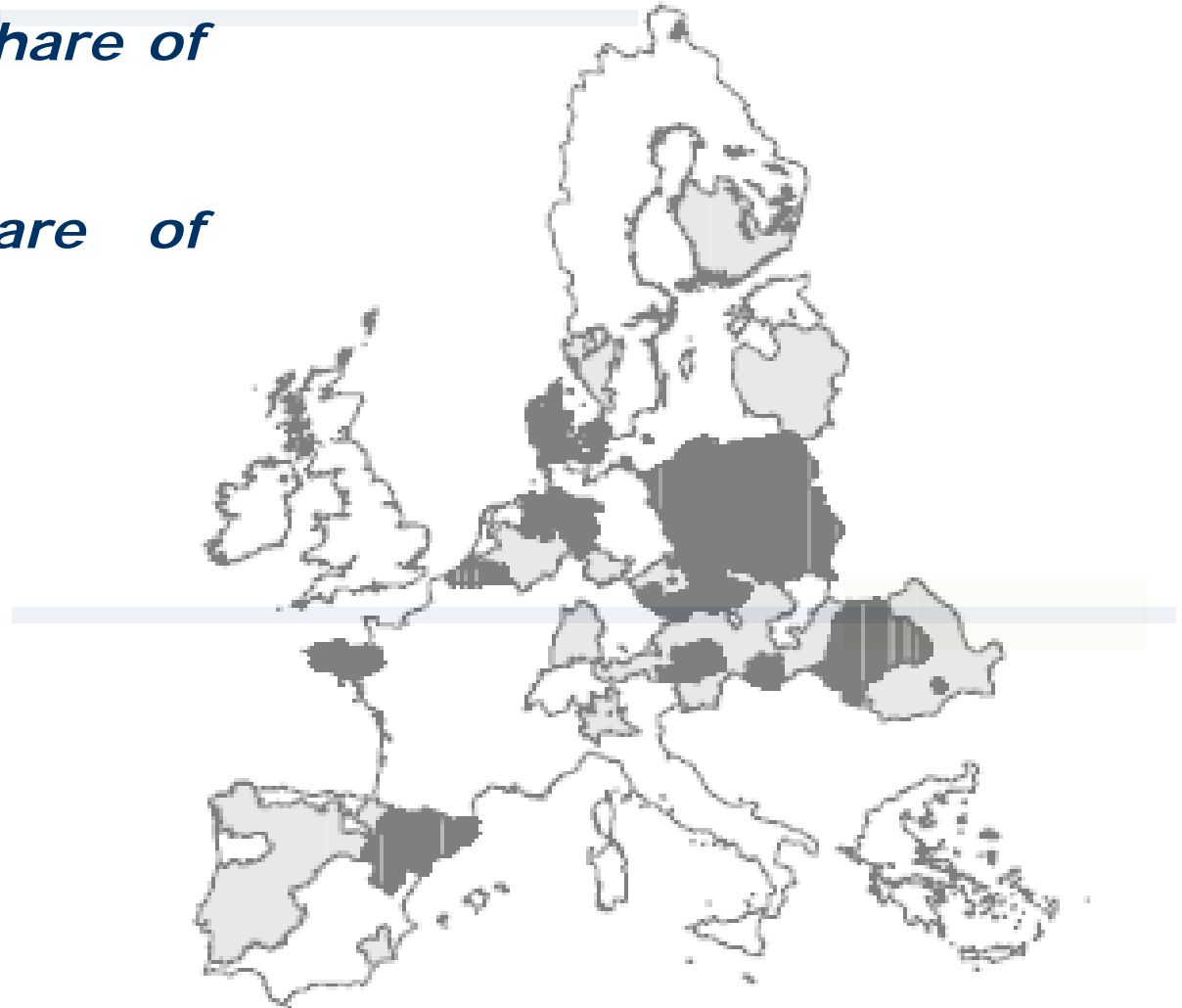
Average holding size by the level of specialisation



Regional specialisation

New clusters in EU N10!

- ◆ *1 x EU average share of pigs in SGM*
- ◆ *2 x EU average share of pigs in SGM*



Regional specialisation *cont.*

| | <i>Region</i> | <i>Country</i> | <i>Share of pigs in SGM</i> |
|-----|---------------------|----------------|--------------------------------|
| 1. | Wielkopolskie | PL | 40,3 |
| 2. | Kujawsko-Pomorskie | PL | 34,1 |
| 3. | Opolskie | PL | 29,6 |
| 4. | Pomorskie | PL | 28,8 |
| 5. | Cataluña | ES | 28,0 |
| 6. | Danmark | DK | |
| 7. | Lodzkie | PL | |
| 8. | Jihovýchod | CZ | |
| 9. | Zachodniopomorskie | PL | |
| 10. | Lubelskie | PL | <i>(Top 10 average = 27,7)</i> |
| 11. | Slaskie | PL | |
| 12. | Aragón | ES | |
| 13. | Lubuskie | PL | |
| 14. | Warminsko-Mazurskie | PL | |
| 15. | Jihozapad | CZ | |
| 16. | Del-Dunántúl | HU | |
| 17. | Mazowieckie | PL | |
| 18. | Bretagne | FR | |
| 19. | Podkarpackie | PL | |
| 20. | Podlaskie | PL | <i>(Top 20 average = 24,4)</i> |
| | EU 25 | | 7,20 |





Conclusions



Conclusions

- *Two years after Big bang...*
 - ... still a long (?) way to go*
- *Competitive position of EU N10*
 - *Technology, management and genetics*
 - *Quality and differentiation*
 - *Efficiency (feed conversion, fertility...)*
 - *Vertical integration (raw material, processing, retailing)*
 - *Investment capacities (capital costs and its availability)*

- + *Regulatory requirements*

+ *Feed costs*

+ *Labour costs and availability*

Existing opportunities but

+ *Consumption increase (purchasing power; related to pig meat price...)*
through modernisation and

modernisation

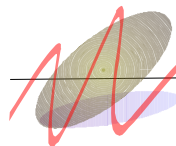
When? How?



Annual EPP Meeting Bled, Slovenia
18. – 20. May 2006

*Status speech of the new
EU acceding countries*

dr. Aleš KUHAR



*Chair for agricultural economics, policy and
law*

University of Ljubljana
Biotechnical Faculty