

Swedish animal welfare
legislation and it's impact on the
competitive strength
of Swedish pig production

EPP – Congress 2006

Barbro Mattsson, Skara, Sweden

Piglet production,

average production parameters obtained from the herd monitoring database

Piglets produced per sow and year	22.6
Age at weaning, days	34
Mortality birth to weaning, %	14.7
Mortality weaning to 30 kg, %	2.6
Age at 30 kg, days	84

Fattening pig production,

average production parameters obtained from the herd monitoring database

Daily weight gain, from 30 to 115 kg live weight, g/d	874
Feed efficiency, kg dry feed/ kg weight gain	2.79
Mortality, %	1.6
Condemned at slaughter, %	0.3
Carcass weight, kg	85.7

Environmental legislation:

Not more than 22 kg Phosphorus / ha / year

Demands according to Swedish animal welfare legislation, farrowing:

- Weaning not earlier than 4 weeks
- Generally, sows in crates are not allowed
- Farrowing pen:
 - minimum 6 m², with a minimum of 4 m² solid floor
 - slatted floor, maximum 35 % opening and maximum 11 mm wide openings

Demands according to Swedish animal welfare legislation, finishers:

- Finishers pen size, 100 kg live weight
 - total 0.94 m² with a minimum of 0.7 m² solid floor / finisher
- Space at feed trough, 100 kg live weight
 - 0.36 m / finisher

Demands according to Swedish animal welfare legislation, dry sows:

- Always loose housing of dry sows

General demands;

- Straw (routing and bedding material)
- No tail docking
- No growth promoters and restricted use of antibiotics, veterinary prescription always needed (1986)
- Stable drawings must be pre-examined
- Day light
- Less than 65 decibel

Trend; piglets age at 30 kg after ban of growth promoters 1986

Days

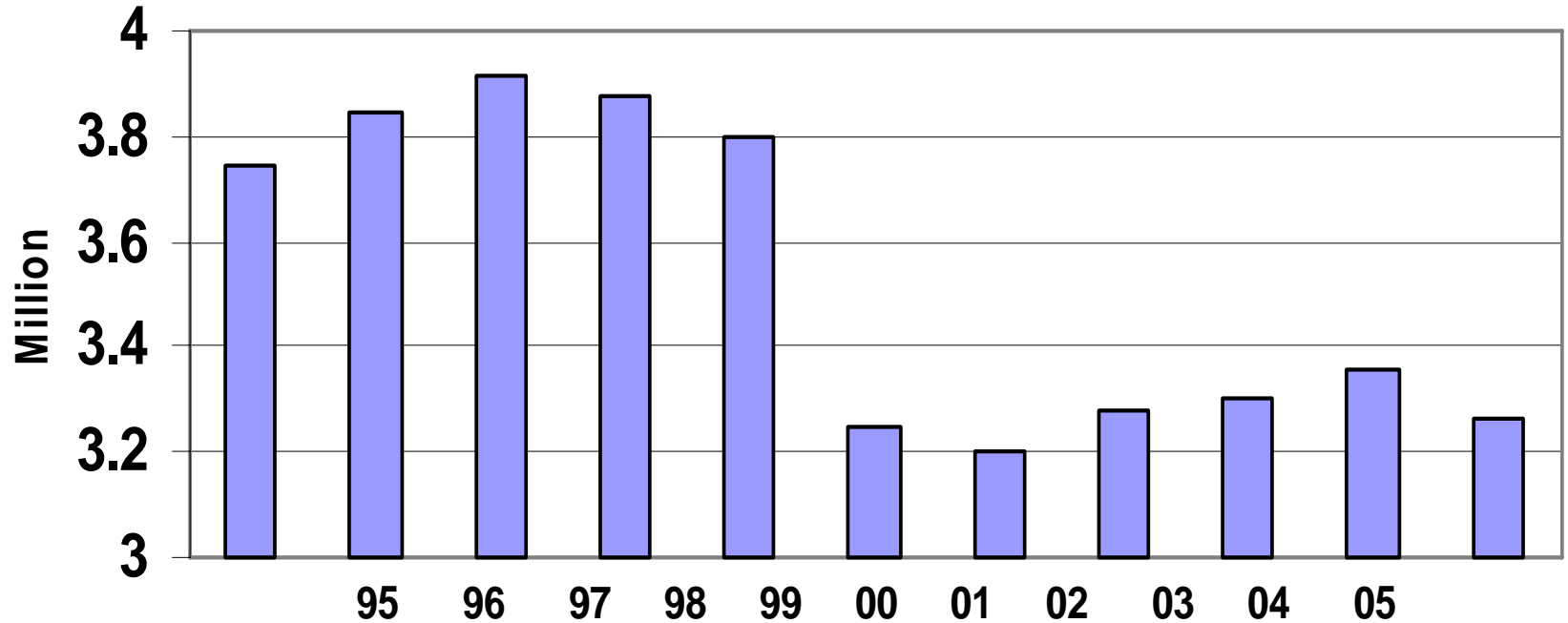


Piglet production

time spent with, % of total (15 h/sow/year)

Feeding	13
Daily pen cleaning	24
Providing straw	10
Farrowing	10
Mating	7
Health control	8
Sorting, delivery	4
Washing	8
Repairing	3
”Miscellaneous”	13

Number of slaughtered pigs / year



Average price 2005 was 1.28 euro / kg carcass

Conclusions

- **Swedish pig production has a high efficiency**
- **Current legislations have negative influence at the willingness to invest in piglet production**
- **At this moment welfare legislations are under revision**
- **1/3 of total labour is spent on daily pen cleaning and providing straw**
- **Swedish consumers don't pay farmers for extra costs due to animal welfare legislations**

Thank you for your attention!