



European Commission  
Agriculture and Rural Development



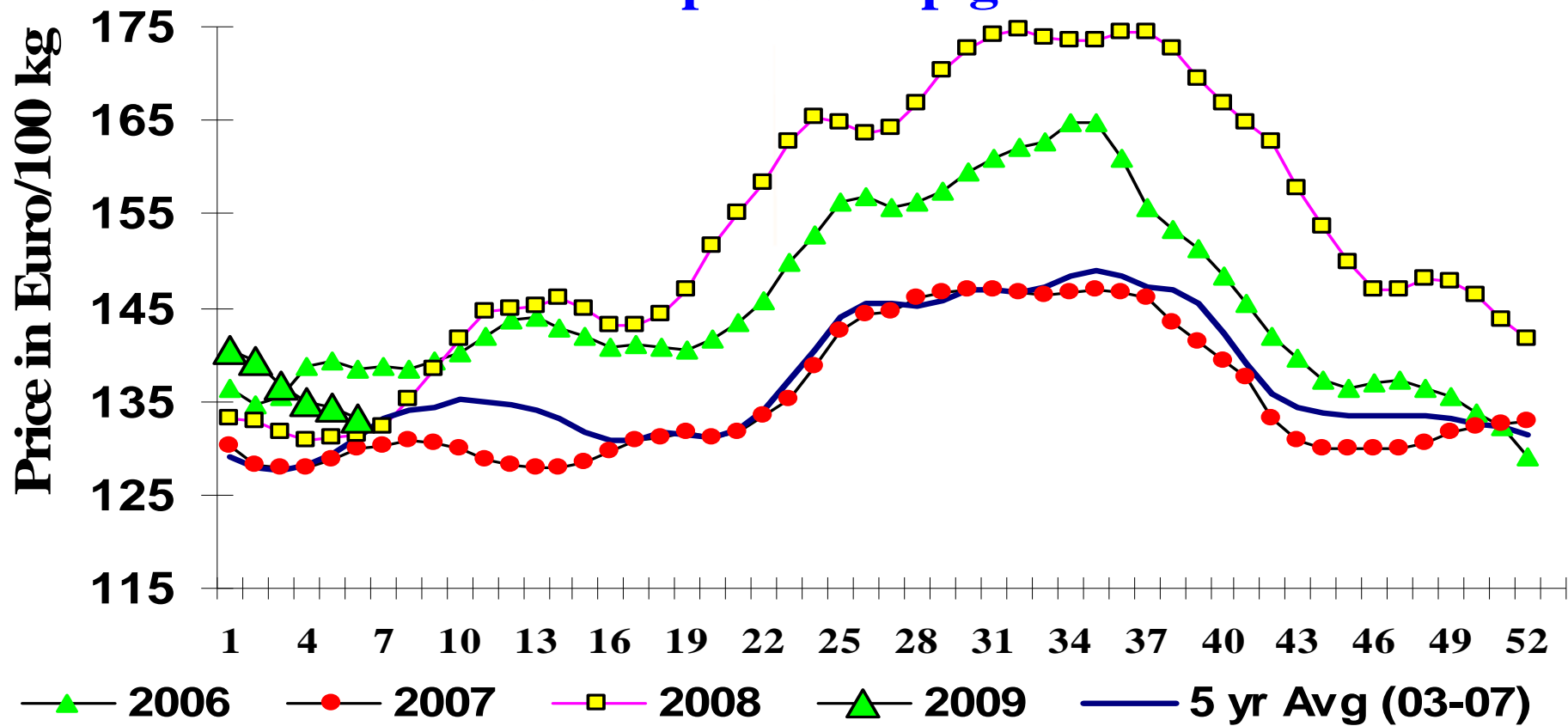
# The European pigmeat sector

**"Single CMO" Management Committee**  
**19 February 2009**



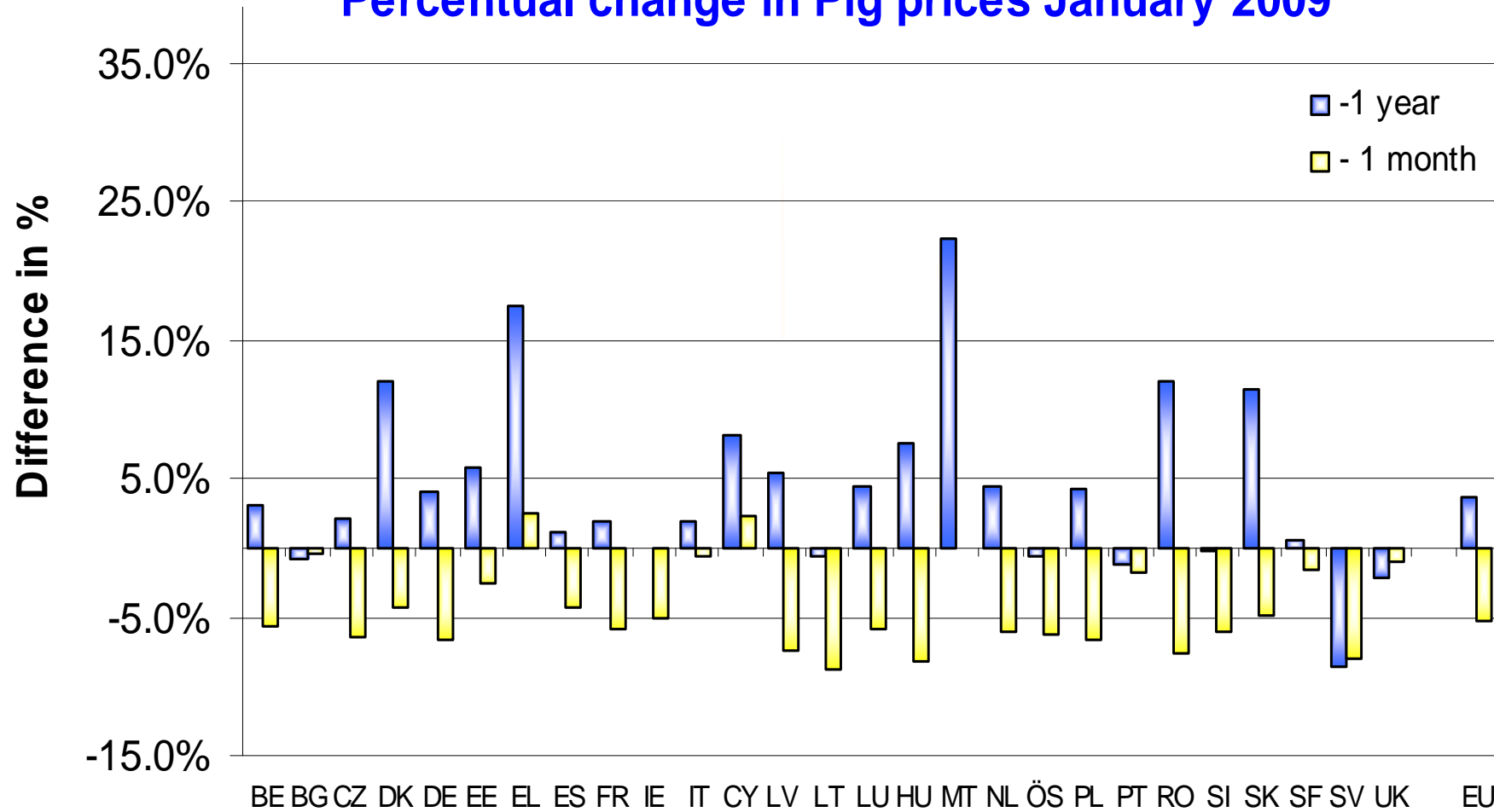
European Commission  
Agriculture and Rural Development

## Development of the Community average market price for pig carcasses





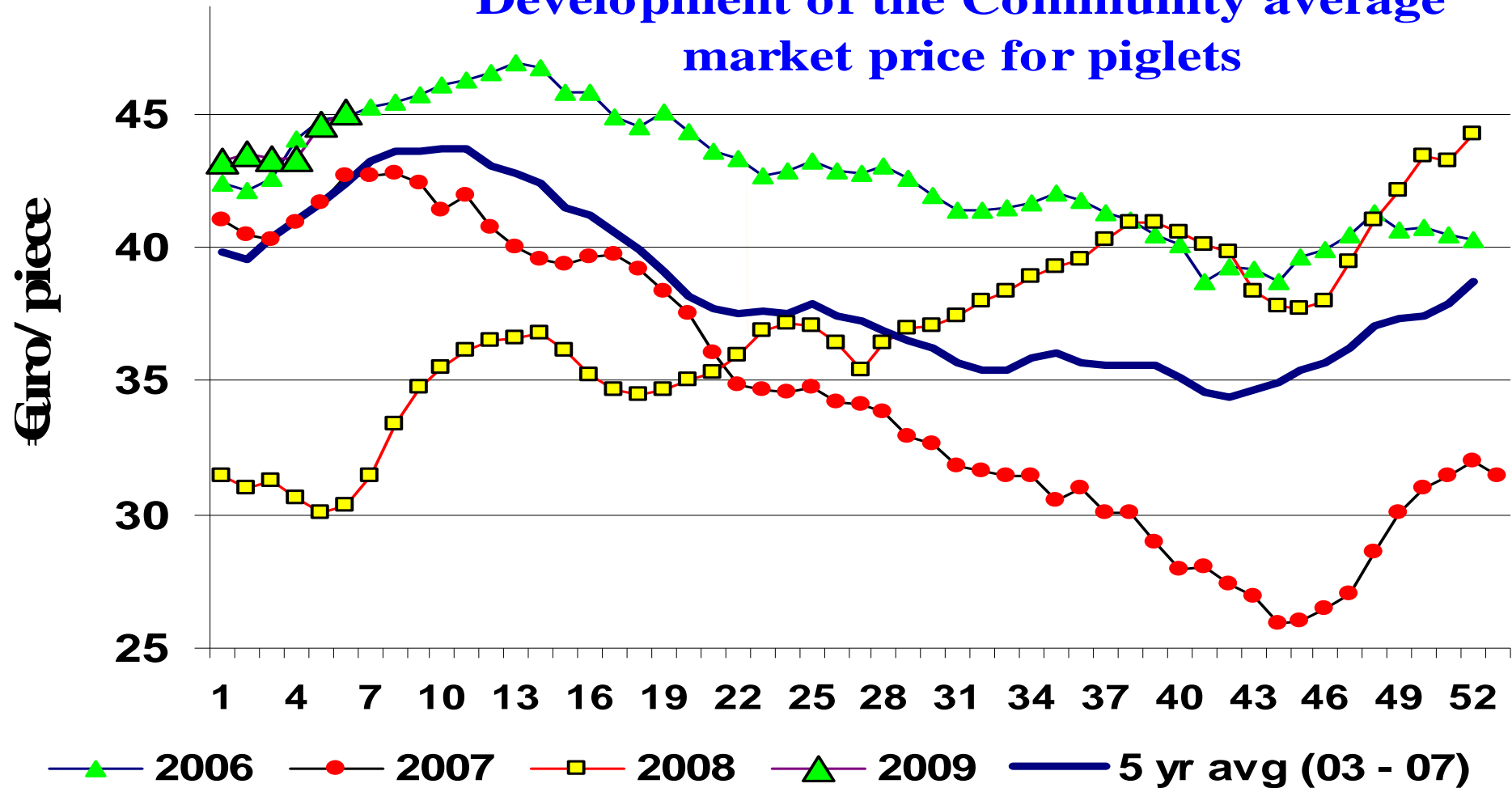
## Percentual change in Pig prices January 2009





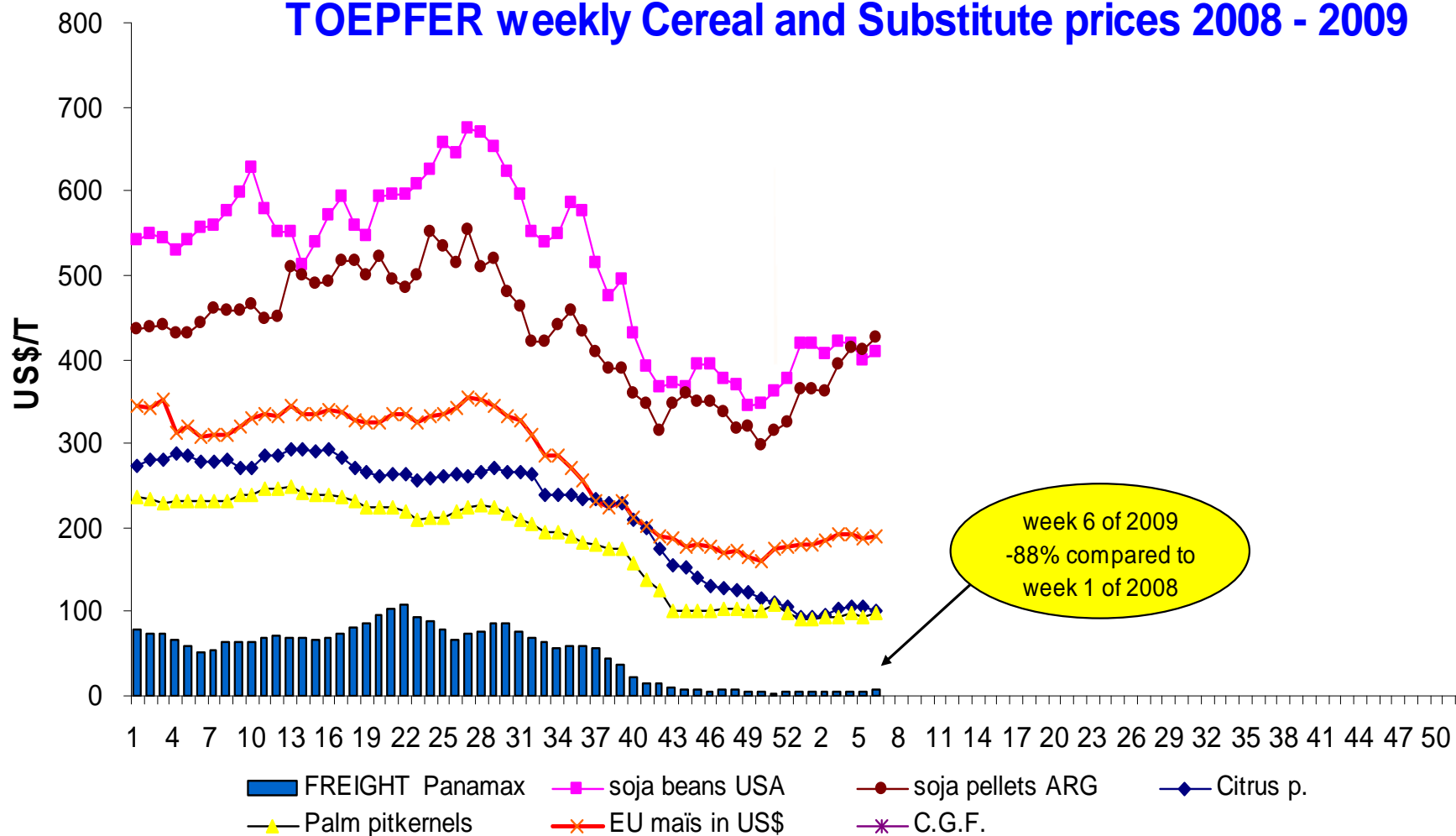
European Commission  
Agriculture and Rural Development

## Development of the Community average market price for piglets





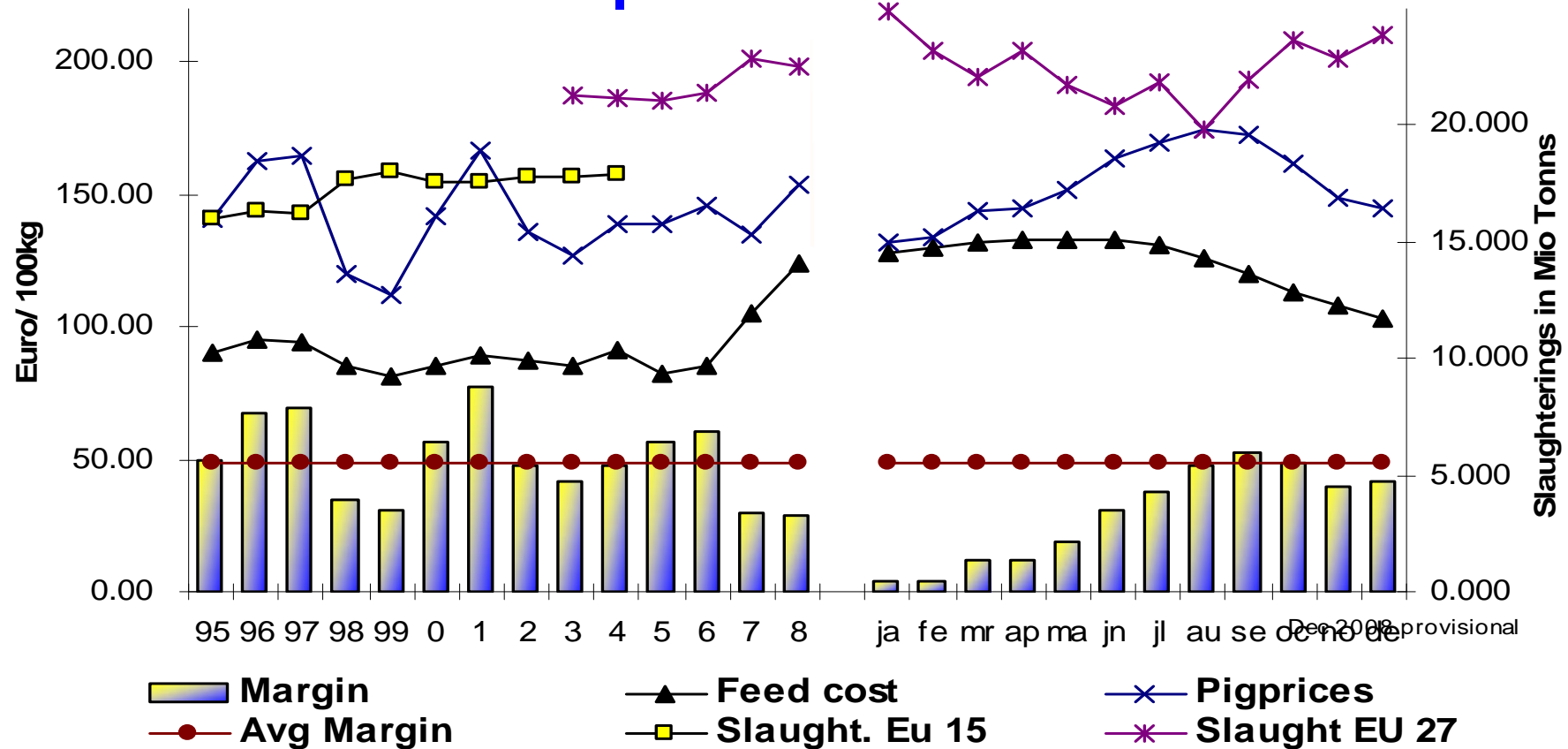
## TOEPFER weekly Cereal and Substitute prices 2008 - 2009





European Commission  
Agriculture and Rural Development

## Prices for slaughtered pigs minus Compound Feed costs

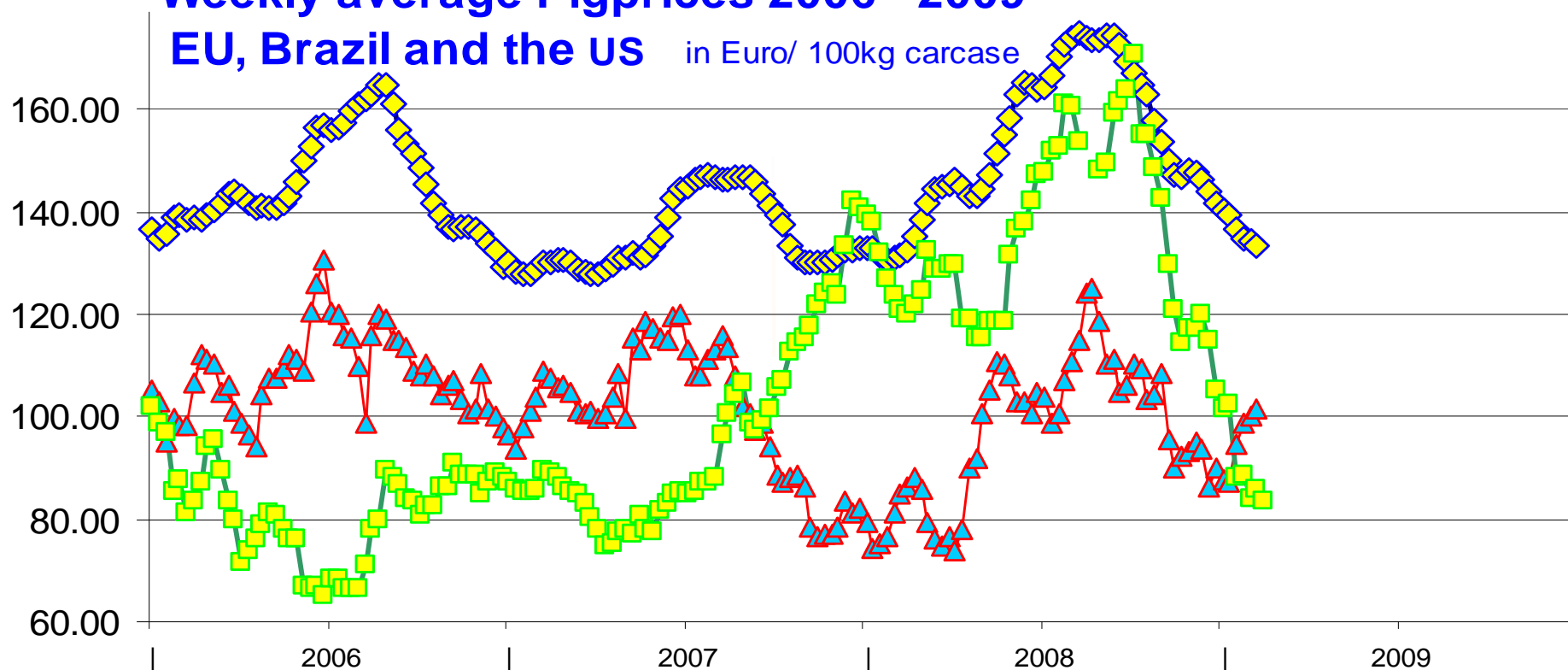




European Commission  
Agriculture and Rural Development

## Weekly average Pigprices 2006 - 2009

EU, Brazil and the US in Euro/ 100kg carcasse



EU = w eighted avg of MS prices grade E <55% lean meat  
US = weekly USDA prices carcasse lean hogs low a-Minn. 167-187lb  
BR = avg of maximum prices in main producing states (suino.com.br)

weeks

—◇— EU  
—△— US  
—□— Braz. avg

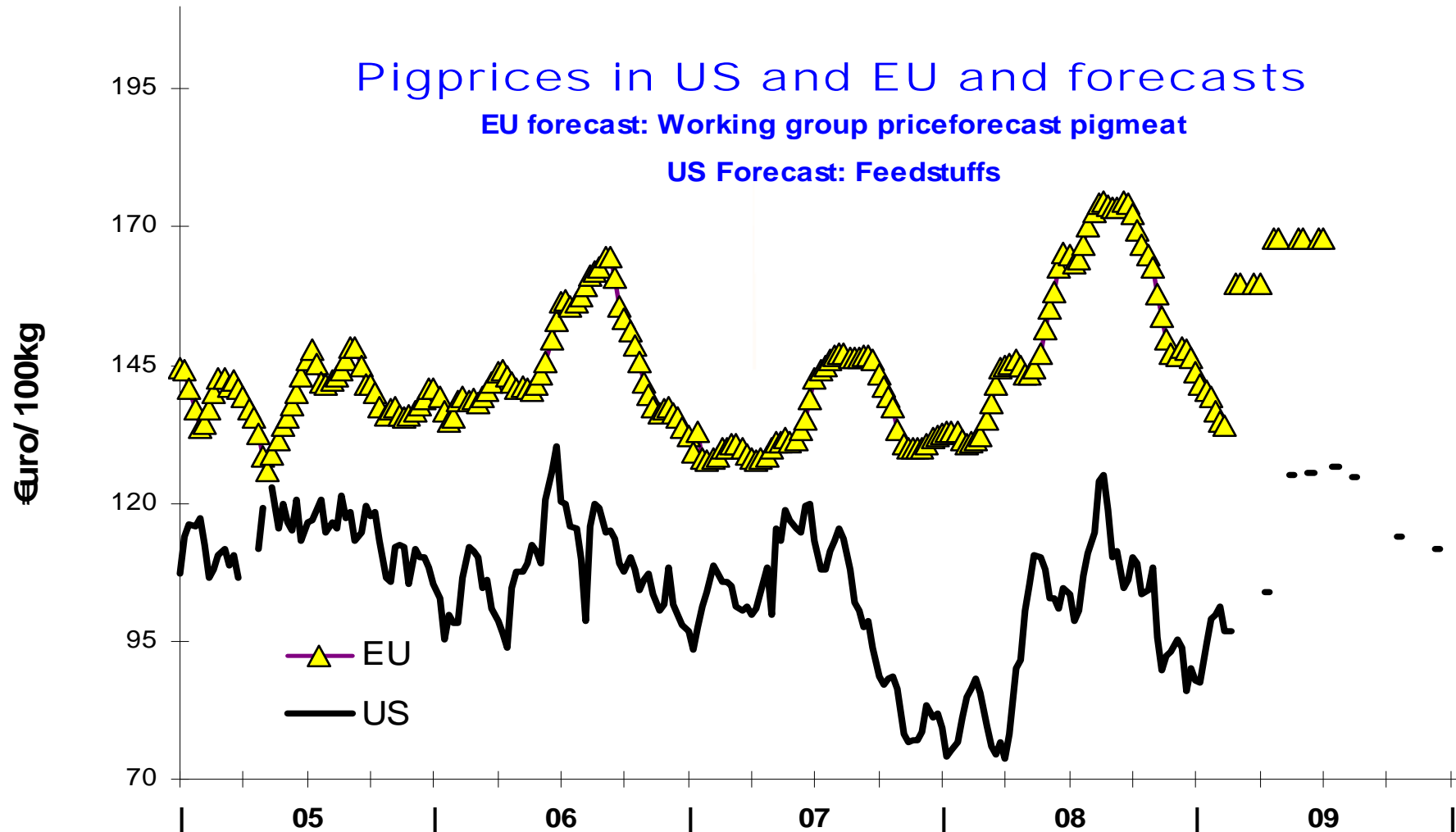


European Commission  
Agriculture and Rural Development

## Pigprices in US and EU and forecasts

EU forecast: Working group priceforecast pigmeat

US Forecast: Feedstuffs

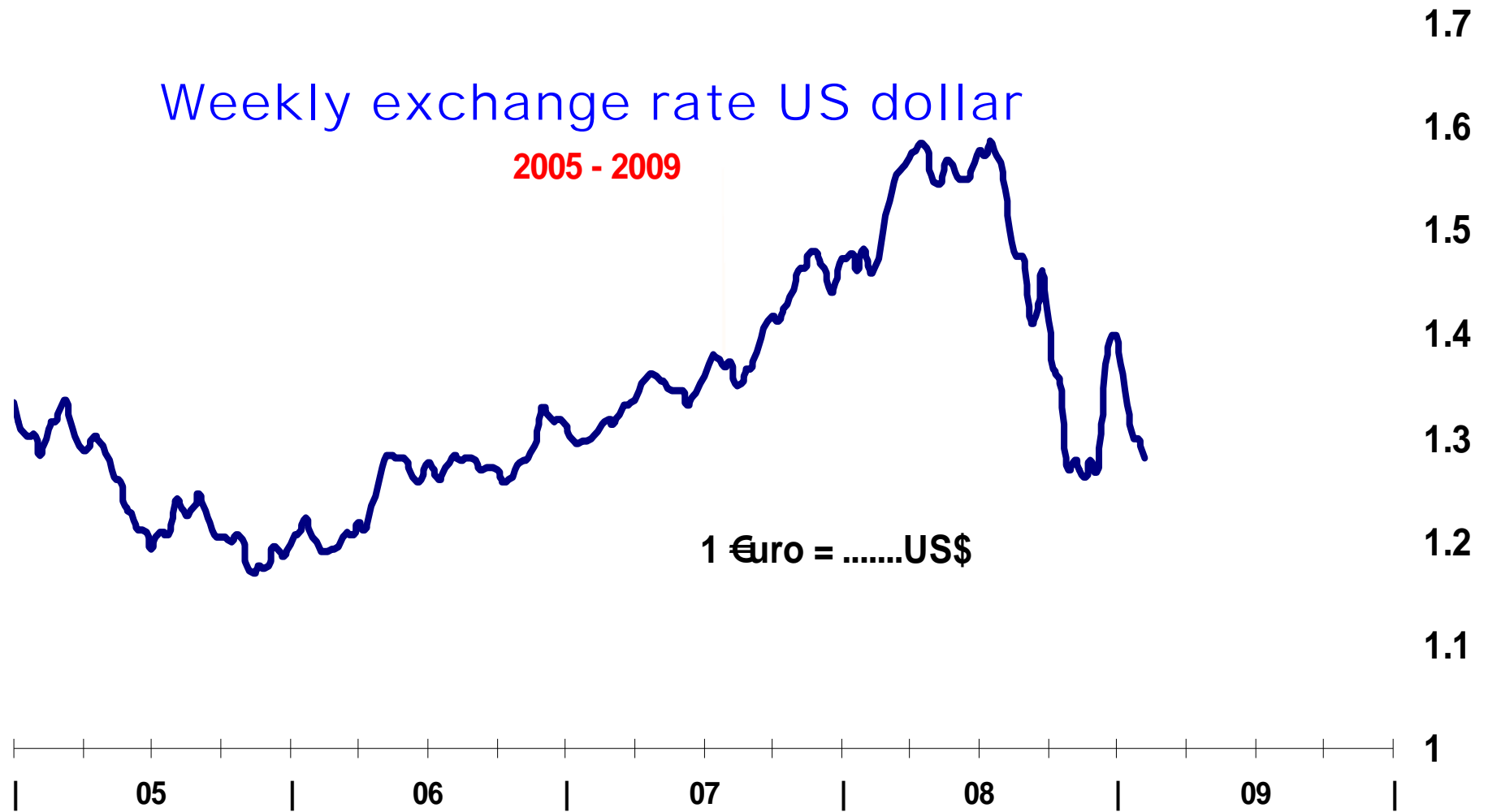




European Commission  
Agriculture and Rural Development

## Weekly exchange rate US dollar

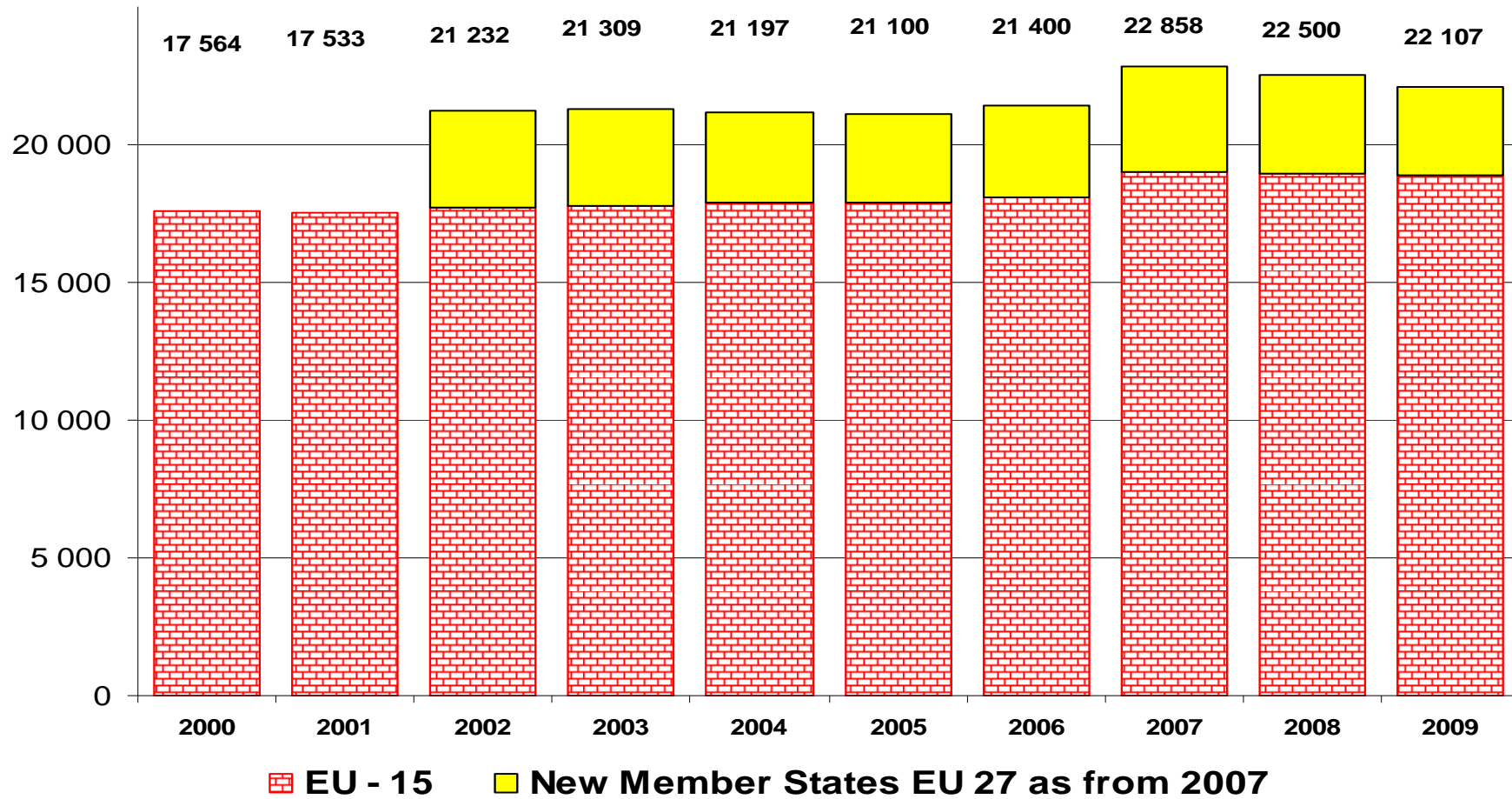
2005 - 2009





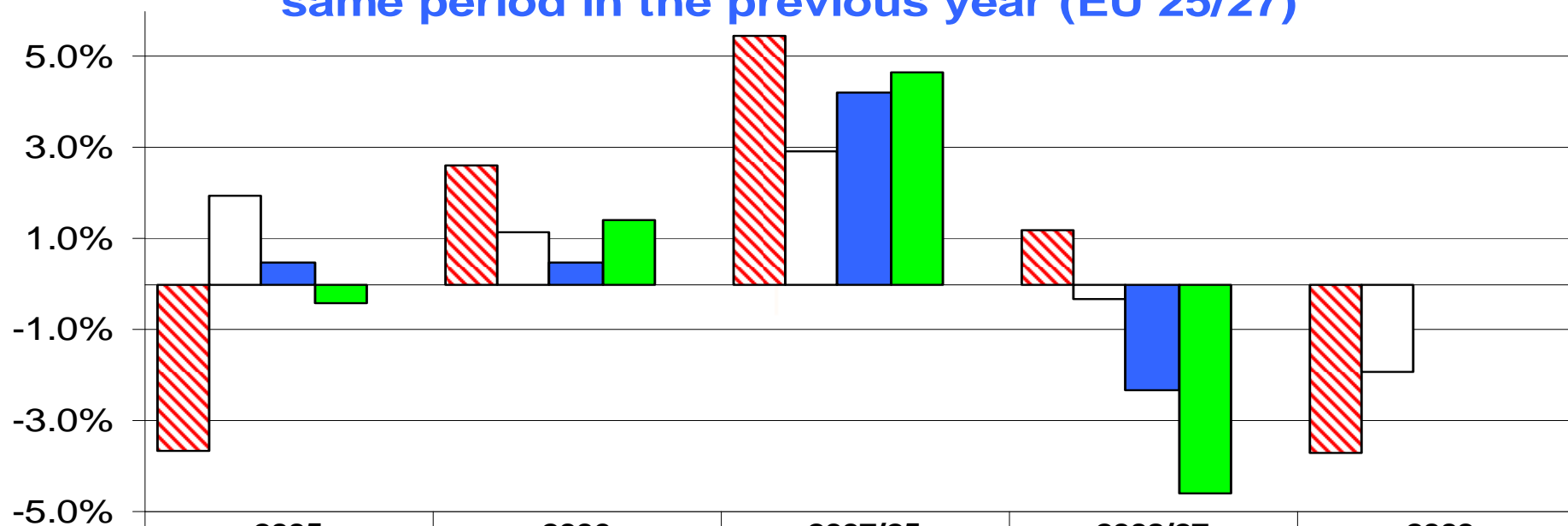
European Commission  
Agriculture and Rural Development

## Pig slaughter in the EU - 15 and EU - enlarged in 1000 Tonn





## Slaughter: Quarterly change compared to the same period in the previous year (EU 25/27)



	2005	2006	2007/25	2008/27	2009
Q1	-3.7%	2.6%	5.4%	1.2%	-3.7%
Q2	2.0%	1.1%	2.9%	-0.3%	-1.9%
Q3	0.5%	0.5%	4.2%	-2.3%	
Q4	-0.4%	1.4%	4.7%	-4.6%	
Ann	-0.5%	1.0%	4.3%	-1.6%	



European Commission  
Agriculture and Rural Development



## Trade in Pigmeat



## EU imports of selected PIG products

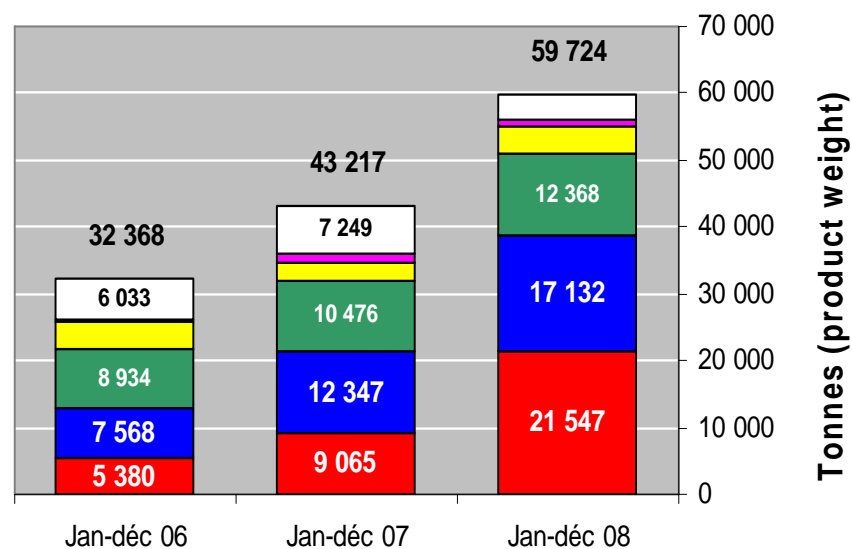
### Trade figures (COMEXT – tonnes product weight)

Origins	2004		2005		2006		2007		Jan-déc 08	
	tonnes	%	tonnes	%	tonnes	%	tonnes	%	tonnes	%
USA	4 890	21.6%	3 532	16.3%	5 380	16.6%	9 065	21.0%	21 547	36.1%
Chile	4 261	18.8%	4 994	23.0%	7 568	23.4%	12 347	28.6%	17 132	28.7%
Sw itzerland	8 331	36.8%	4 933	22.7%	8 934	27.6%	10 476	24.2%	12 368	20.7%
Croatia	1 594	7.0%	2 189	10.1%	3 930	12.1%	2 863	6.6%	3 964	6.6%
Serbia		0.0%	716	3.3%	523	1.6%	1 217	2.8%	1 181	2.0%
Russia	84	0.4%	280	1.3%	313	1.0%	280	0.6%	583	1.0%
Canada	61	0.3%	79	0.4%	252	0.8%	2 660	6.2%	53	0.1%
EXTRA EU15-25-27	22 612		21 730		32 368		43 217		59 724	
% change			- 4%		+ 49%		+ 34%		+ 38.2%	



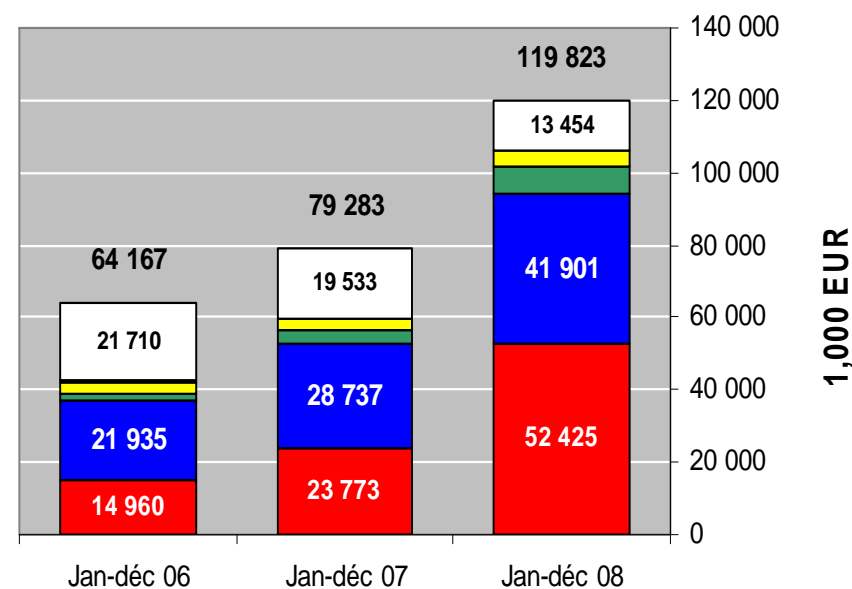
## EU imports of selected PIG products Trade figures (COMEXT – tonnes product weight)

IMPORTS of PIG Meat into EU-27  
(Tonnes prod. weight)



USA Chile Switzerland  
Croatia Serbia Other destinations

IMPORTS of PIG Meat into EU-27 (1000 EUR)

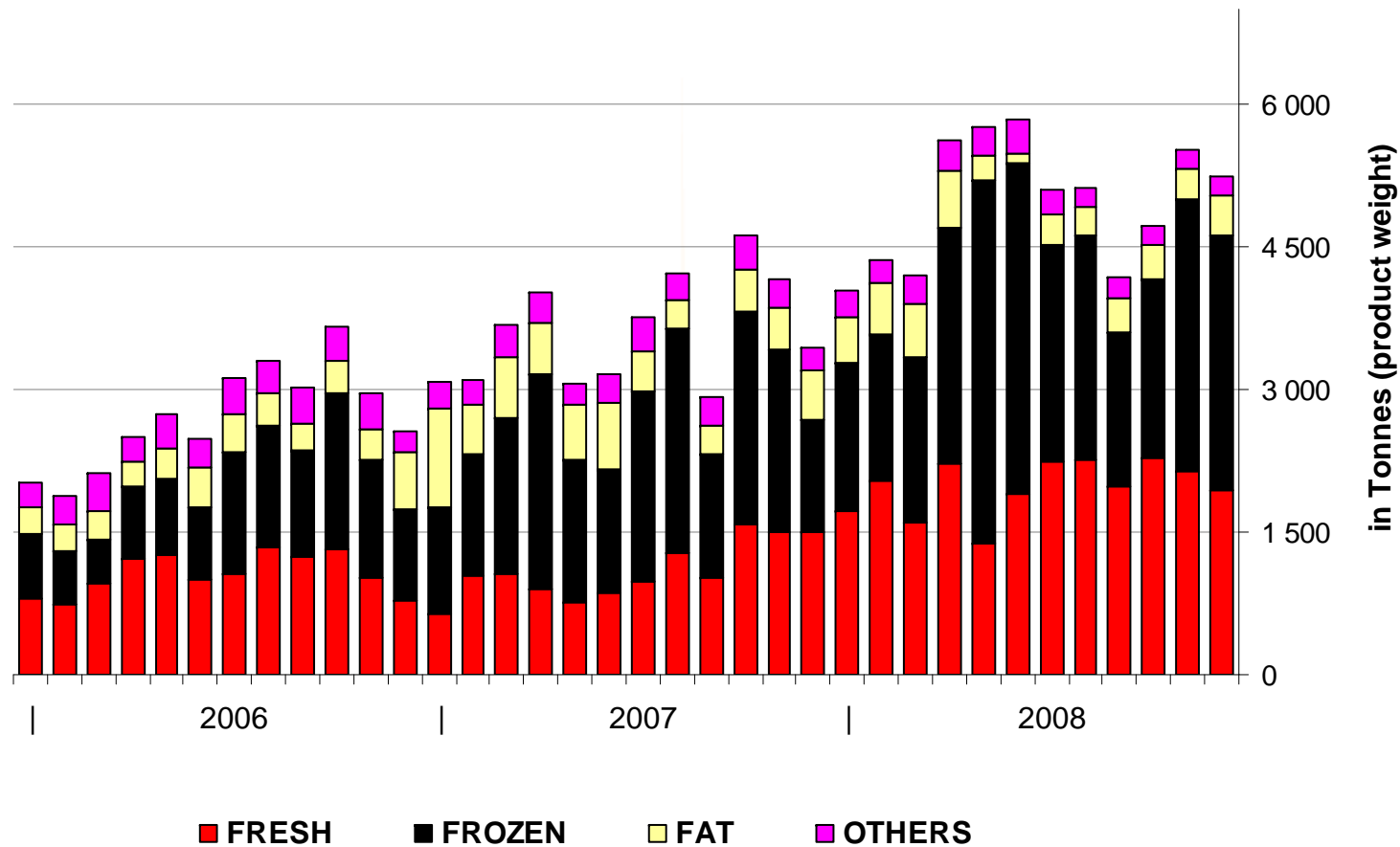


USA Chile Switzerland  
Croatia Serbia Other destinations



European Commission  
Agriculture and Rural Development

## Imports of selected PIG products



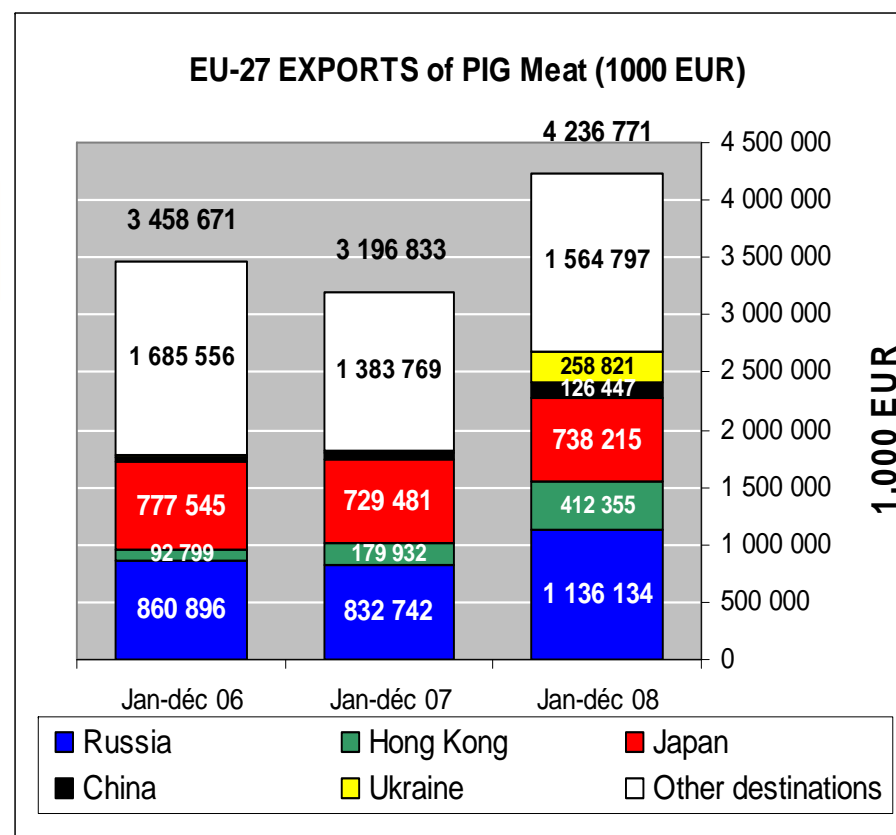
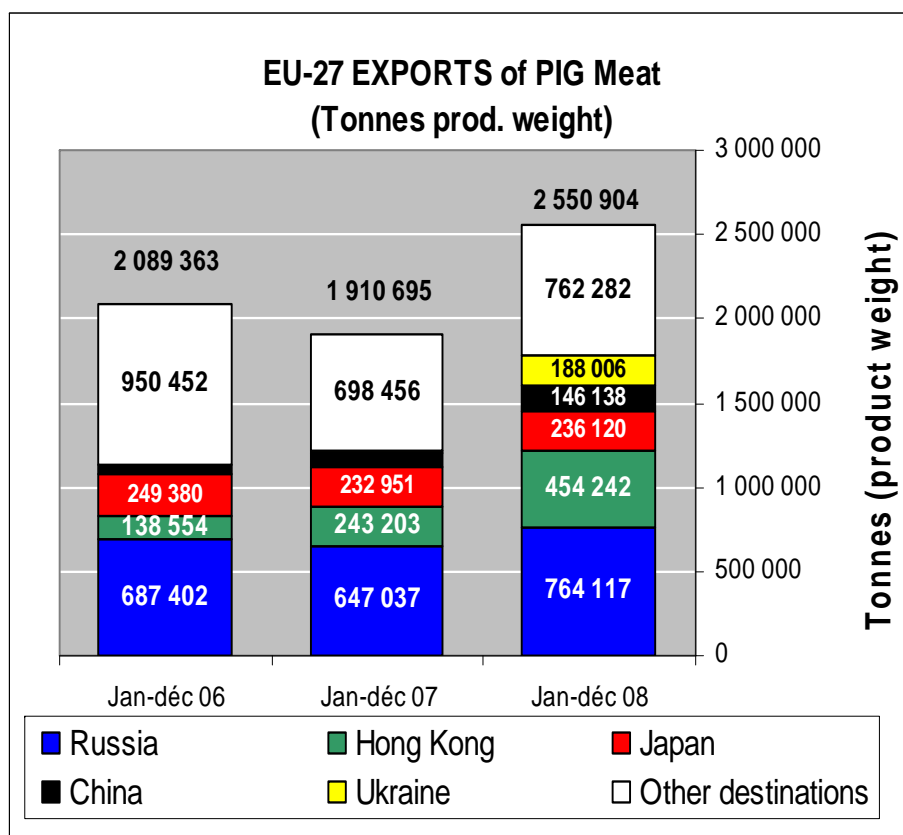


## EU exports of selected PIG products: Trade figures (COMEXT – tonnes product weight)

Destinations	2004		2005		2006		2007		Jan-déc 08		Compared to 07
	tonnes	%	tonnes	%	tonnes	%	tonnes	%	tonnes	%	
Russia	418 176	23.5%	485 437	25.0%	687 402	32.9%	647 057	33.9%	764 117	30.0%	+ 18%
Hong Kong	157 424	8.8%	139 578	7.2%	138 554	6.6%	243 203	12.7%	454 242	17.8%	+ 87%
Japan	360 621	20.3%	305 731	15.8%	249 380	11.9%	232 951	12.2%	236 120	9.3%	+ 1%
Ukraine	21 203	1.2%	47 814	2.5%	9 789	0.5%	2 757	0.1%	188 006	7.4%	+++
China	53 167	3.0%	70 788	3.7%	53 785	2.6%	86 291	4.5%	146 138	5.7%	+ 69%
South Korea	111 770	6.3%	117 671	6.1%	142 599	6.8%	137 443	7.2%	115 693	4.5%	- 16%
Croatia	41 939	2.4%	59 964	3.1%	56 785	2.7%	56 171	2.9%	63 706	2.5%	+ 13%
USA	86 454	4.9%	72 843	3.8%	67 048	3.2%	66 527	3.5%	61 288	2.4%	- 8%
Belarus	30 247	1.7%	48 506	2.5%	59 586	2.9%	10 529	0.6%	55 090	2.2%	+++
Angola	29 379	1.6%	34 356	1.8%	40 757	2.0%	48 637	2.5%	48 922	1.9%	+ 1%
Australia	29 145	1.6%	28 126	1.5%	29 579	1.4%	34 583	1.8%	45 604	1.8%	+ 32%
Philippines	28 066	1.6%	20 896	1.1%	23 321	1.1%	34 217	1.8%	40 911	1.6%	+ 20%
EXTRA EU15-25-27	1 780 568		1 938 455		2 089 363		1 910 695		2 550 904		
% change			+ 9%		+ 8%		- 9%		+ 33.5%		



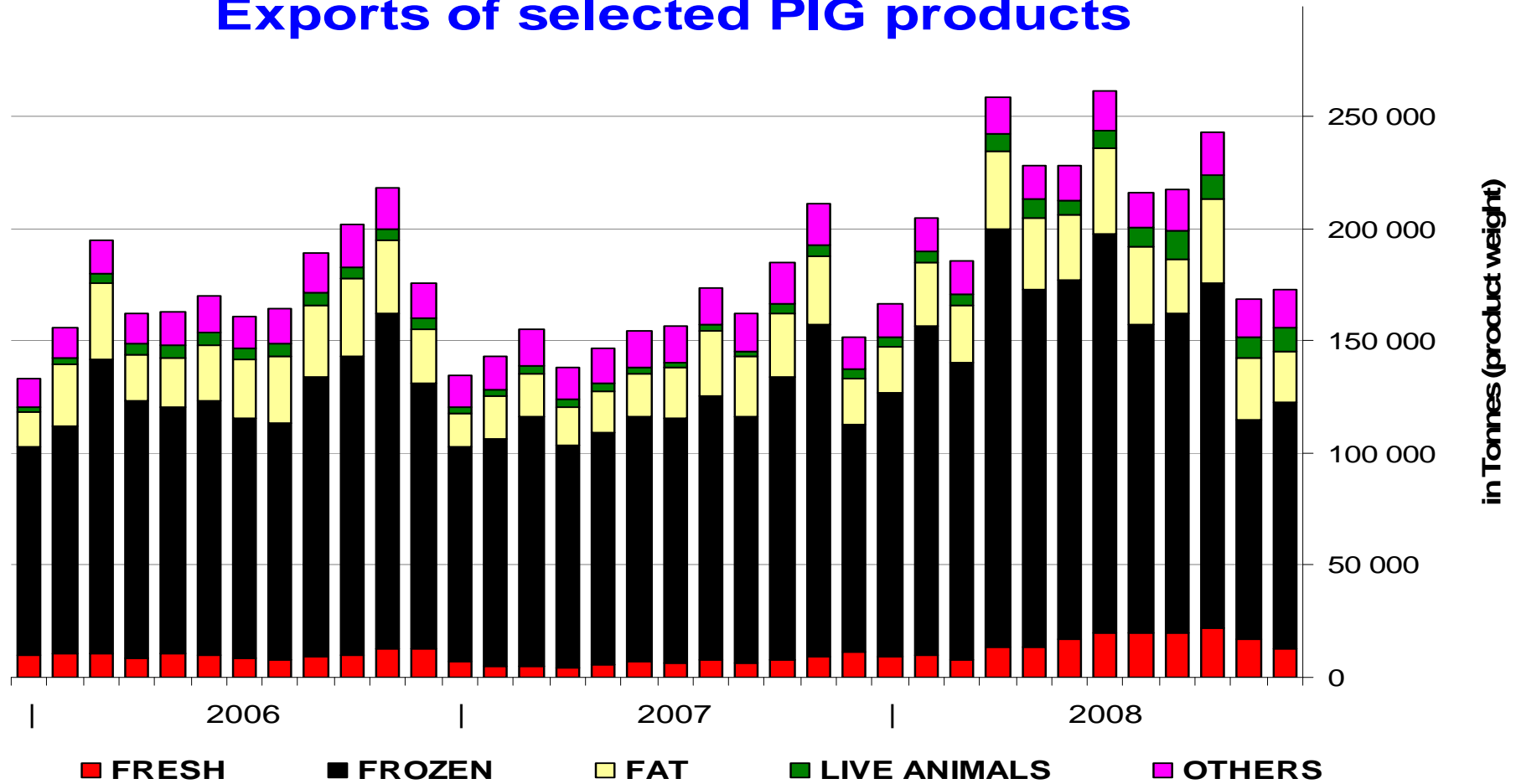
## EU exports of selected PIG products Trade figures (COMEXT – tonnes product weight)





European Commission  
Agriculture and Rural Development

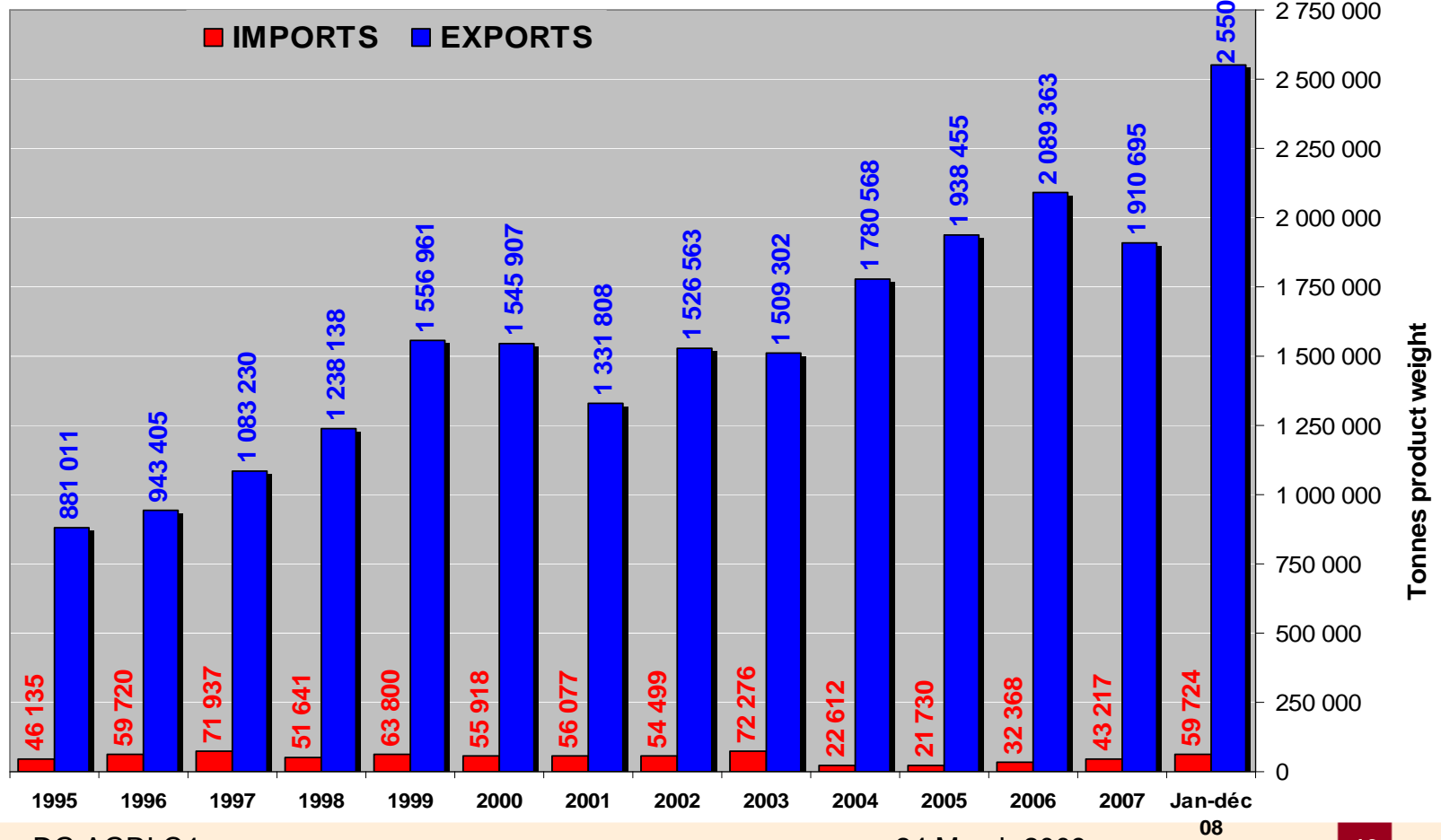
## Exports of selected PIG products





European Commission  
Agriculture and Rural Development

## EU trade of PIG products





European Commission  
Agriculture and Rural Development

### Cumulated quantity of weekly requests for Export licenses in the Pigmear sector for Gatt year 2008 - 2009

