



SAERIMNER

Part of Idavang Group

Claus Baltersen, Chairman of the Board

# The beginning

In Norse mythology Sęhrímnir is a creature that is described as a „Cosmic Boar“ that is hunted, killed, and eaten every night, only to be resurrected so that it can be hunted, killed, and eaten the next night. It provides food for the Aesir and Einherjar in the feasting hall of Valhalla. It is never truly revealed what Sęhrímnir is, but some have called it a boar.



„Sęhrímnir“

A detail from the artwork of Deirdre Byrne

# Why Lithuania?

- Established in 1999 m. by 4 Dane farmers.
- Why here?
  - Historical farming traditions.
  - Deficit market.
  - European culture.

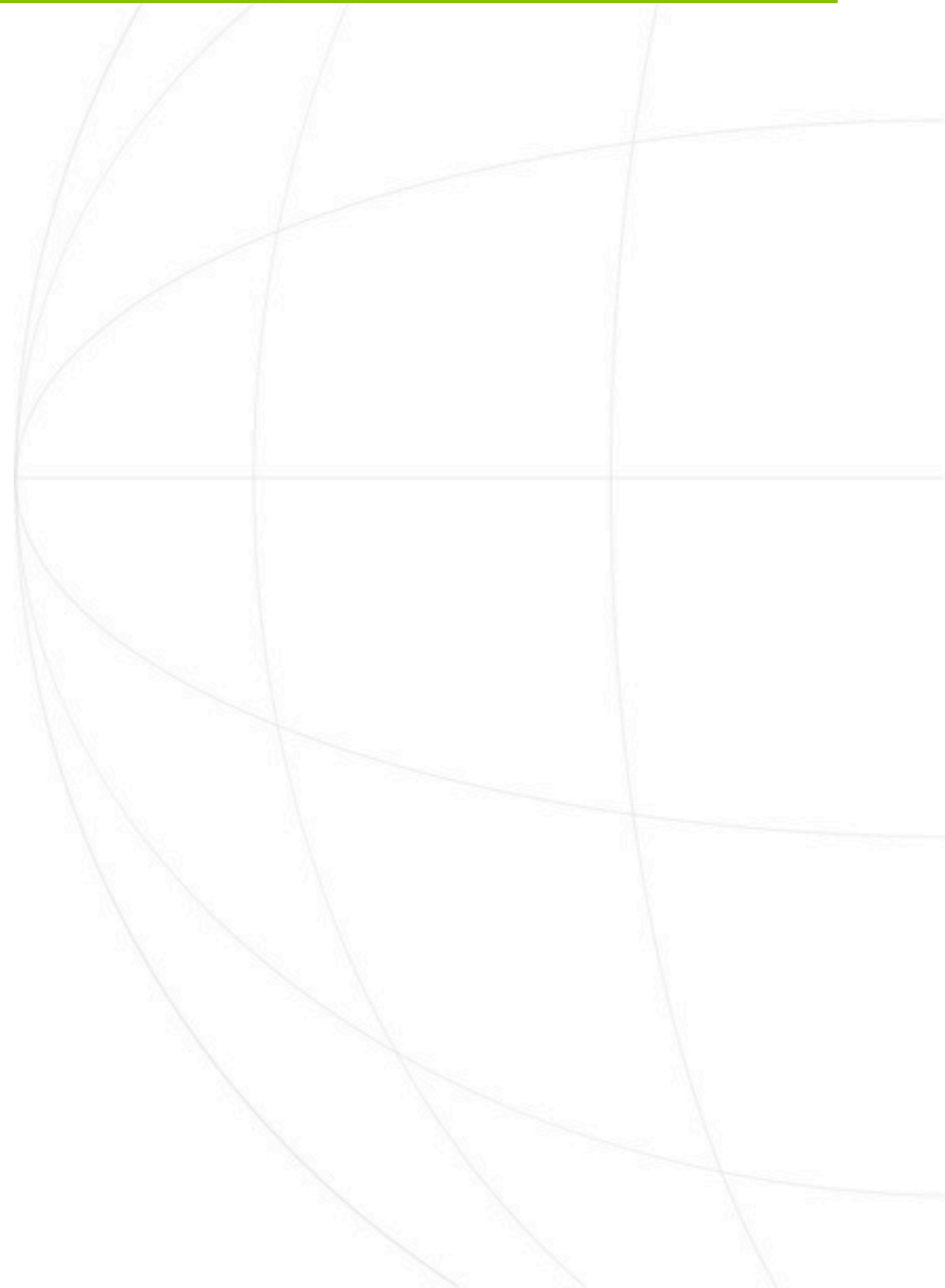


# Development

Year	Farm
1999	Salnaiciu
2000	Rupinskai
2002	Musa
2004	Sajas
2005	Kalvariju
2007	Skabeikiai
2007	Lekeciai
2008	Pasodele
2011	Kepaliu bekonas
2011	Sesupe
2011	Seduva

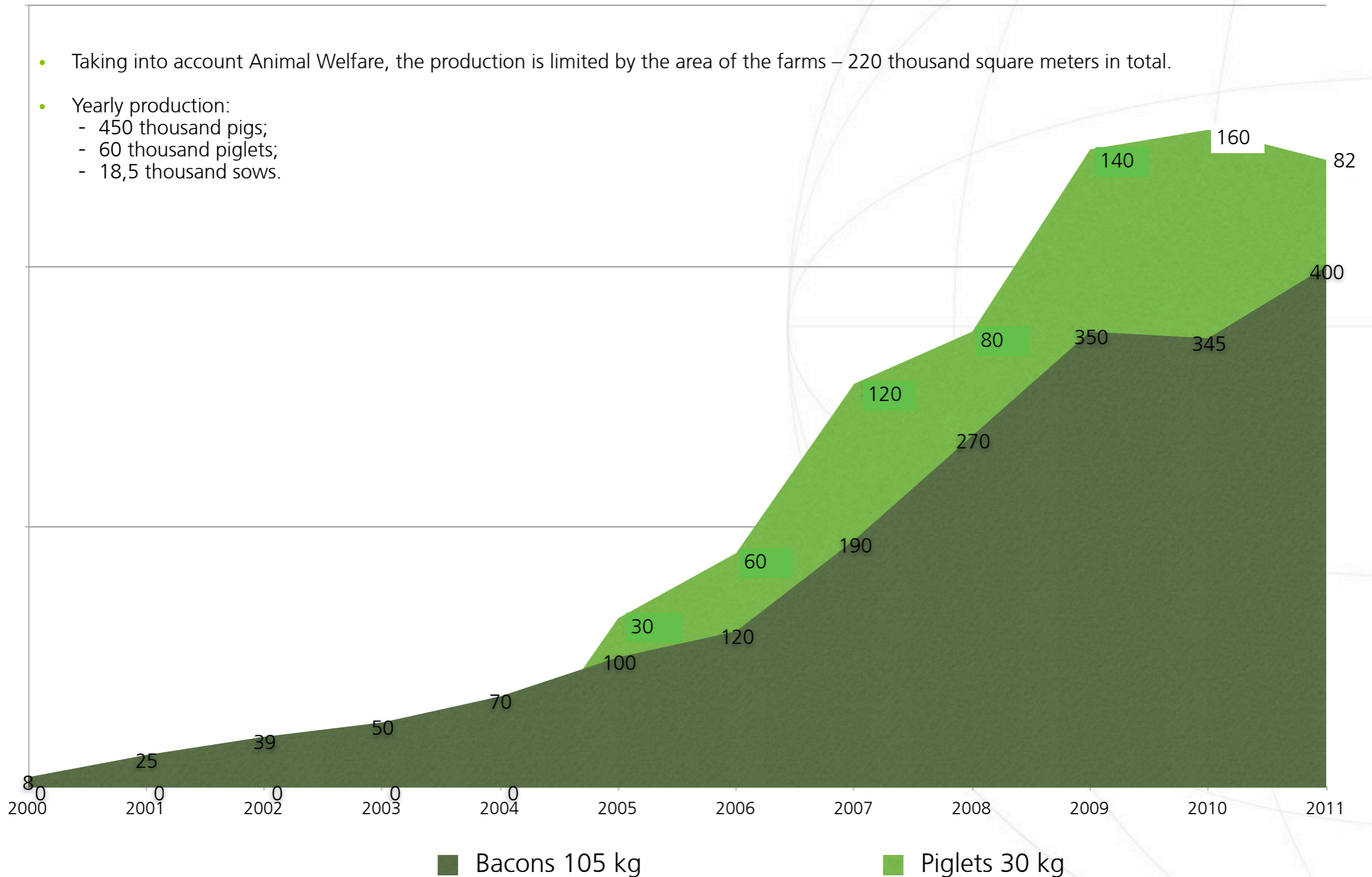


# Our farms now



# Production

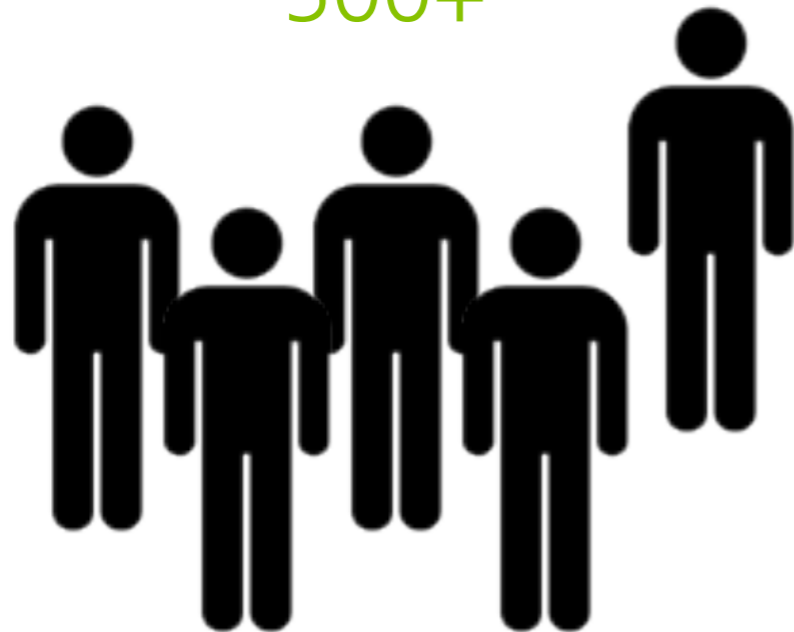
- Taking into account Animal Welfare, the production is limited by the area of the farms – 220 thousand square meters in total.
- Yearly production:
  - 450 thousand pigs;
  - 60 thousand piglets;
  - 18,5 thousand sows.



# Employees

Number of employees  
(most of them live in periphery)

500+



In pig production 1 workplace creates 2  
additional workplaces in other related  
markets

+1000

# Slurry handling. Separator





# Slurry handling. Solids



# Slurry handling. Closed lagoons



# Slurry handling. Pump



# Slurry handling. Pioneer

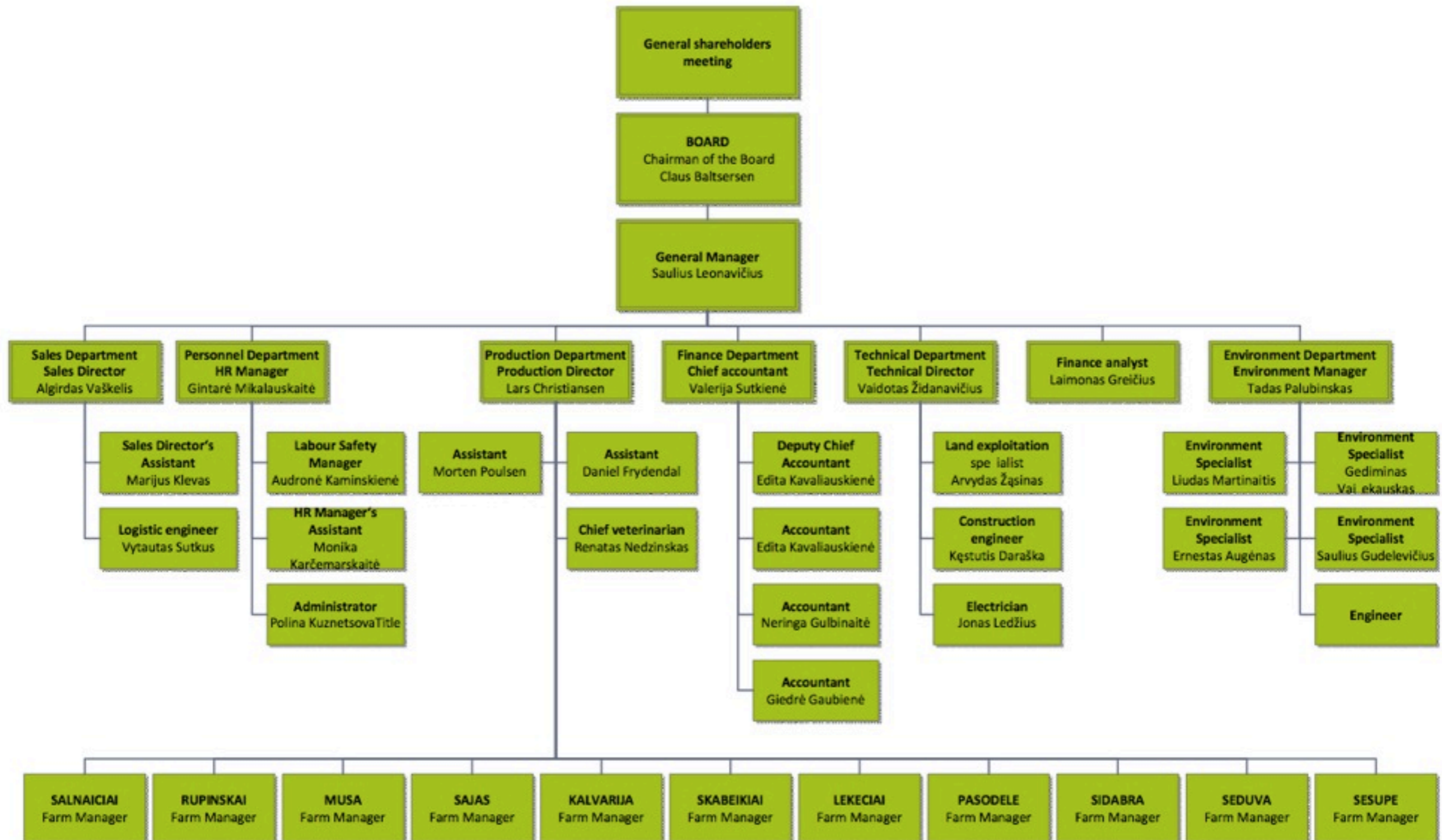


# Feed

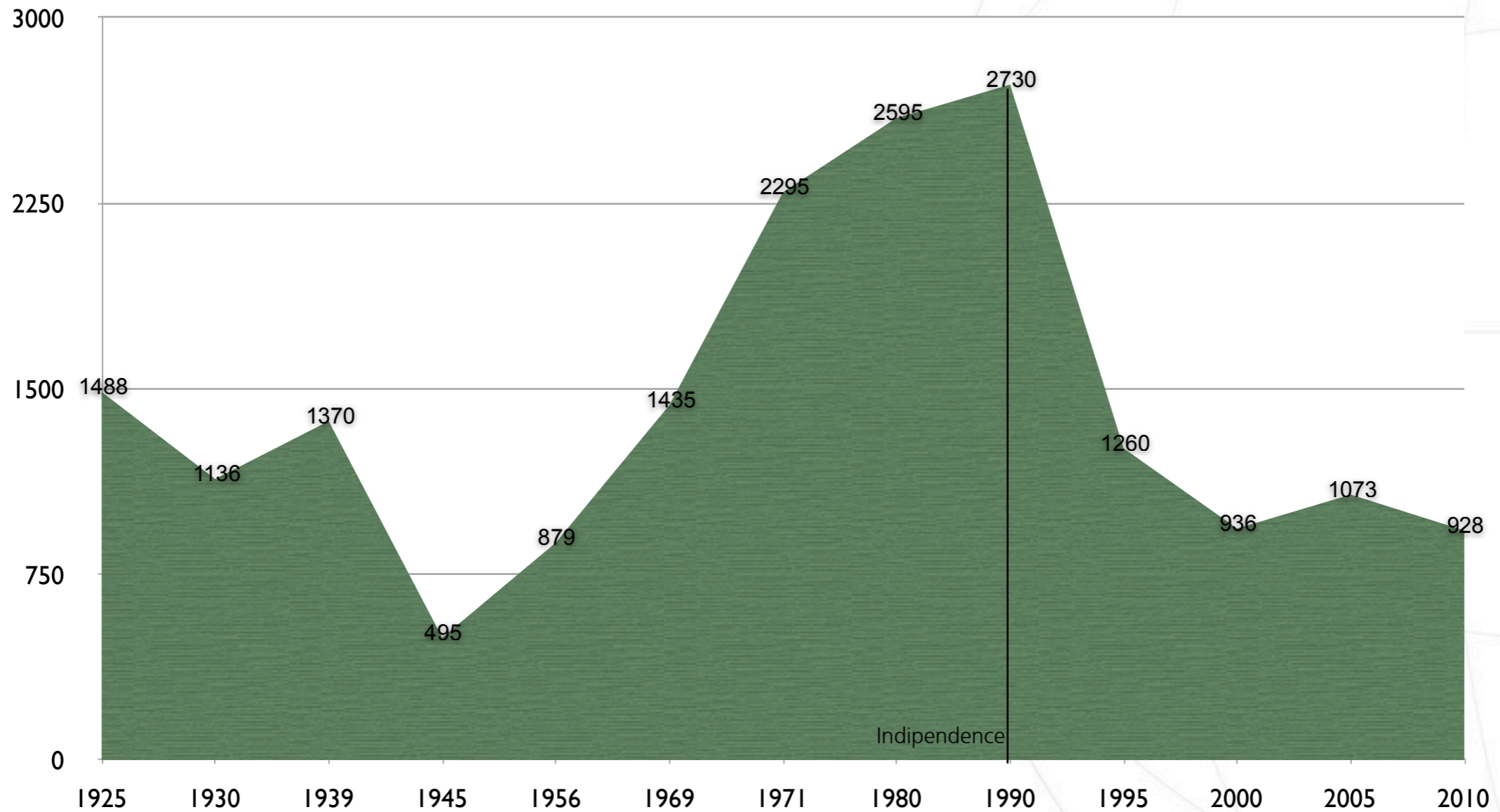
- Fodder, which is one of the main factors influencing animal health and their welfare, is also very important for the quality of meat, provided to consumers. Therefore we use only the best quality feedstuff, as Barley, Wheat and Soya as main fodder.
- As we strive for quality, we mix the ingredients at our own mills.
- We buy about 130 tons of grains each year. It's about 4,2% of all the grains, bought in Lithuania.



# Organization



# Pig production in Lithuania



Slaughter capacity 6 mil paid by EU (SAPARD).

# Rurik Agro

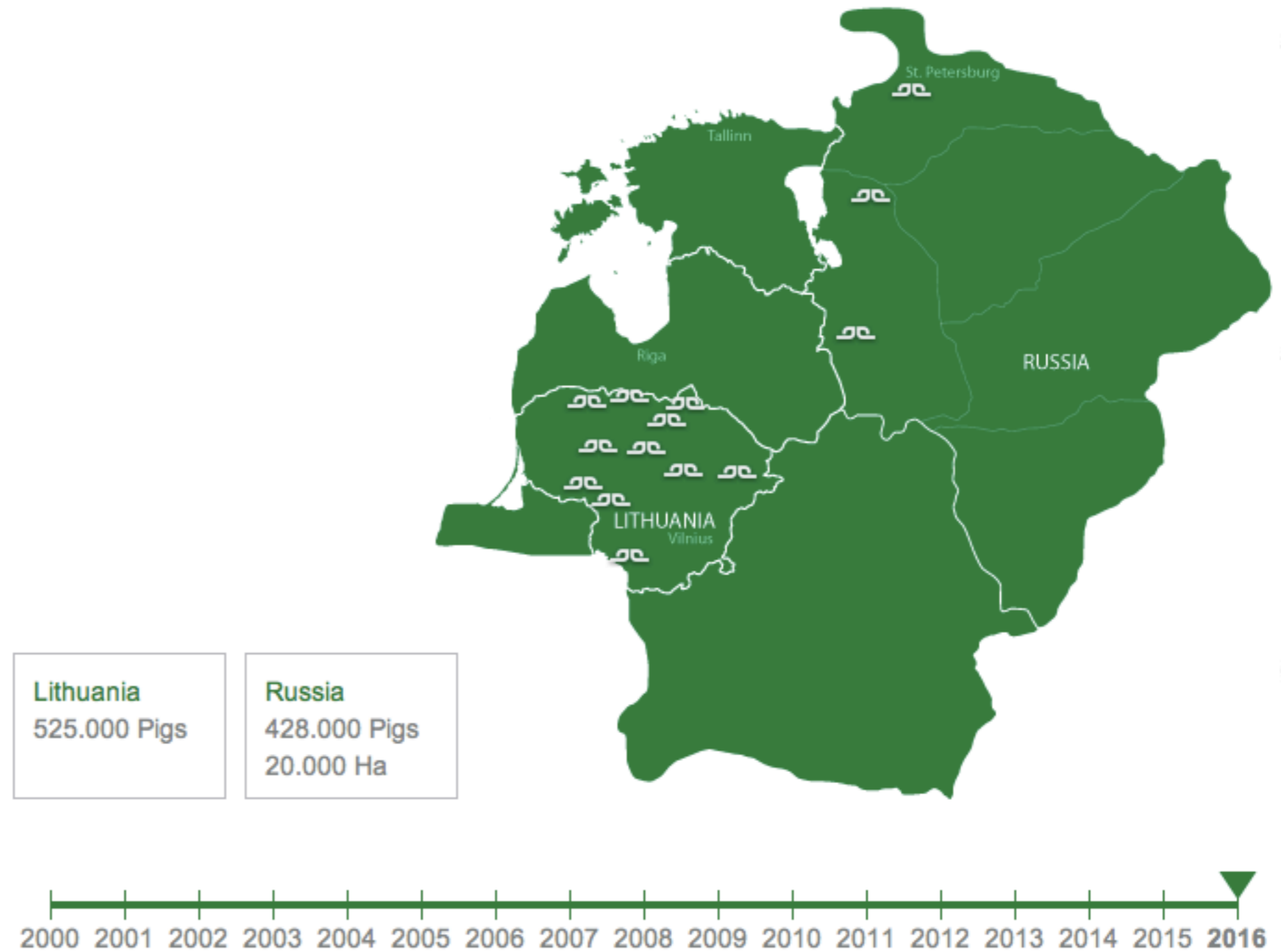




# New farm in Russia



# Future



# What can EPP do better to promote the business?

- Why are we always in defence?
- Why are we not making the questions to EU do we need animal production?
- Do EU accept to import from countries who not are in line with 2013 animal welfare?
- Do EU thinking about that soon there will be 9 billion people who need to eat?
- Why do we accept to be compared with the worst criminal's every day?



SAERIMNER

Part of Idavang Group